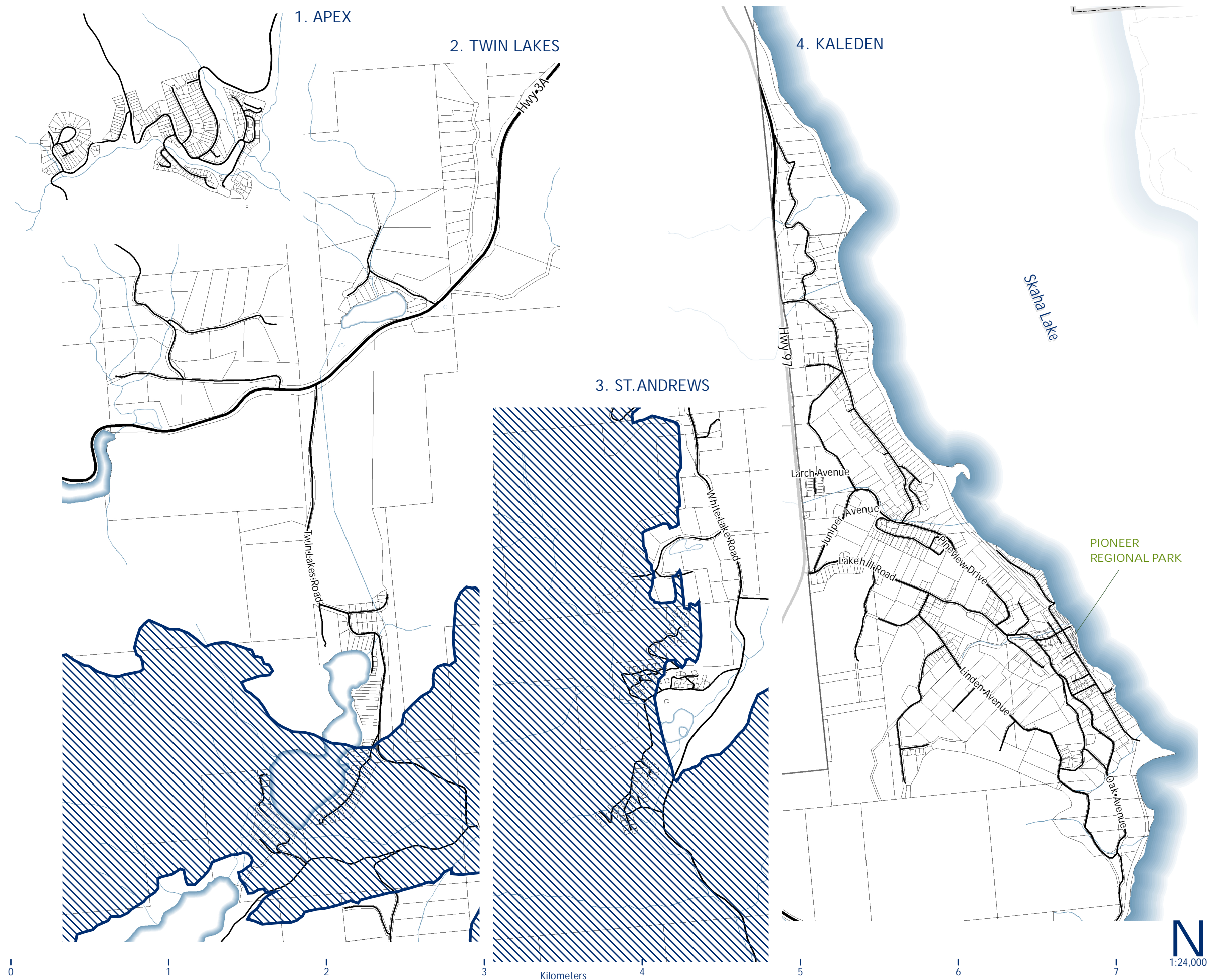


1. APEX

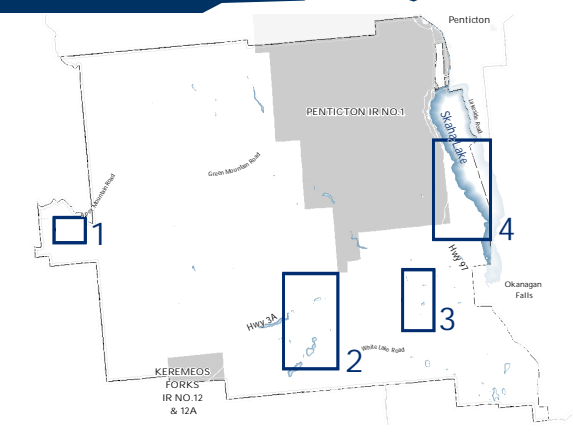
2. TWIN LAKES

4. KALEDEN

3. ST. ANDREWS



**RDOS AREA "I" OCP SCHEDULE 'C'  
DOMINION RADIO ASTROPHYSICAL  
OBSERVATORY (DRAO) – RADIO  
FREQUENCY INTERFERENCE (RFI)  
AREA INSETS**



DRAO Radio Frequency Interference Area

- note: The Radio Frequency Interference (RFI) Area identifies the approximate areas that are:
1. Directly within the lines-of-sight of existing telescopes or potentially within the lines-of-sight of any future telescopes;
  2. Within 61.0 metres vertically of such lines-of-sight; and,
  3. Within 2.5 km of the Observatory.

This is Schedule 'C' (Official Community Plan Map) as referenced in the Regional District of Okanagan-Similkameen's Electoral Area "I" Official Community Plan Bylaw No. 2683, 2016

Chair \_\_\_\_\_  
Chief Administrative Officer \_\_\_\_\_  
Schedule Amendments: Bylaw Number, Adoption Date \_\_\_\_\_