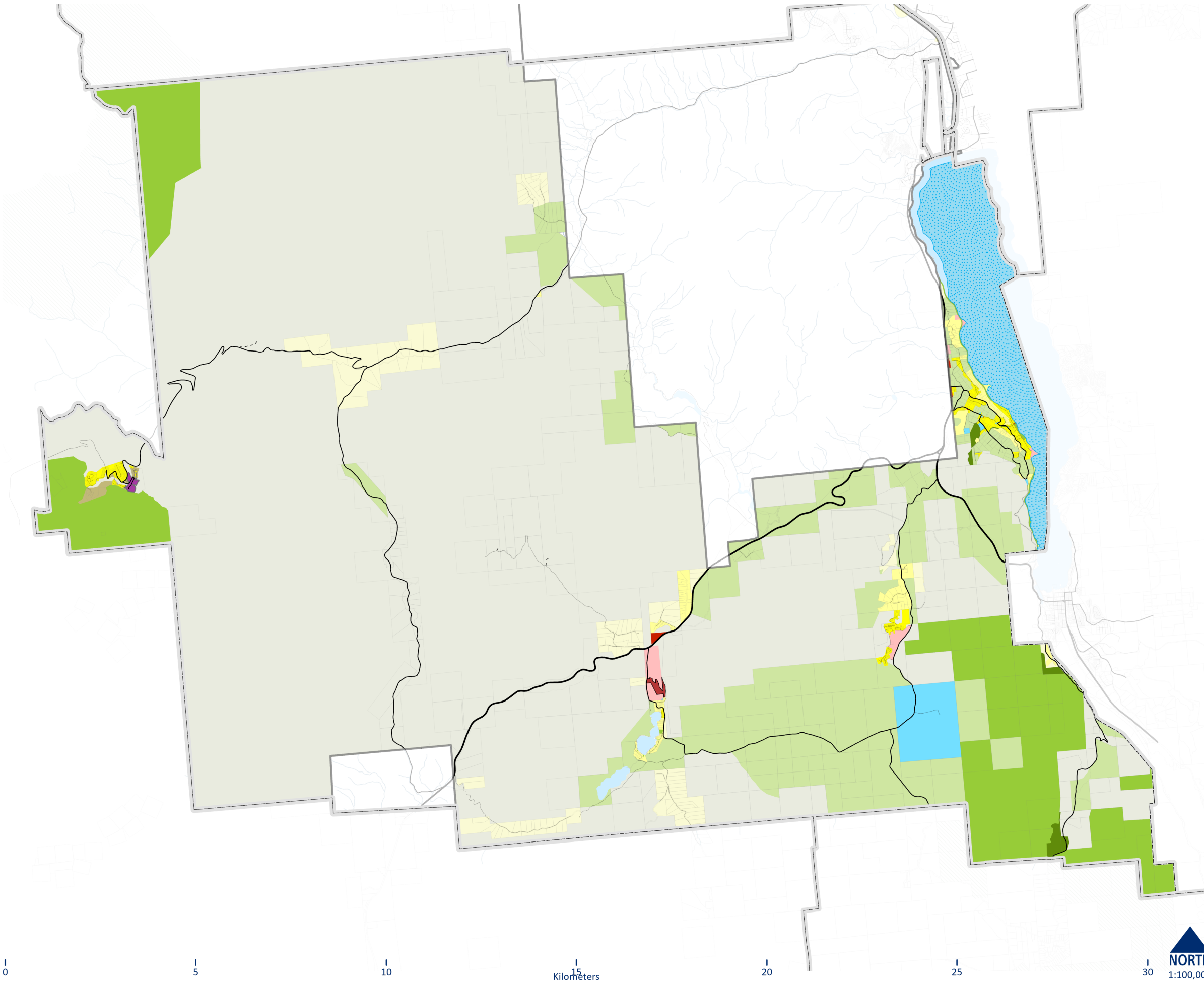


**RDOS AREA "I" OCP SCHEDULE 'B'  
OFFICIAL COMMUNITY  
PLAN MAP**



- Future Land Use Designations**
- AG - Agriculture
  - RA - Resource Area
  - LH - Large Holdings
  - SH - Small Holdings
  - LR - Low Density Residential
  - MR - Medium Density Residential
  - RMU - Residential Mixed Use
  - C - Commercial
  - CT - Commercial Tourist
  - AI - Administrative, Cultural and Institutional
  - PR - Parks, Recreation and Trails
  - CA - Conservation Area
  - TLVC - Twin Lakes Village Centre
  - AVC - Apex Village Centre
  - BL - Okanagan Basin Lake

This is Schedule 'B' (Official Community Plan Map) as referenced in the Regional District of Okanagan-Similkameen's Electoral Area "I" Official Community Plan Bylaw No. 2683, 2016

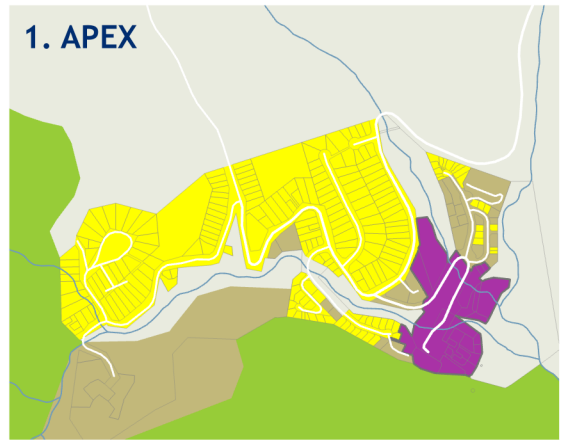
Chair \_\_\_\_\_

Chief Administrative Officer \_\_\_\_\_

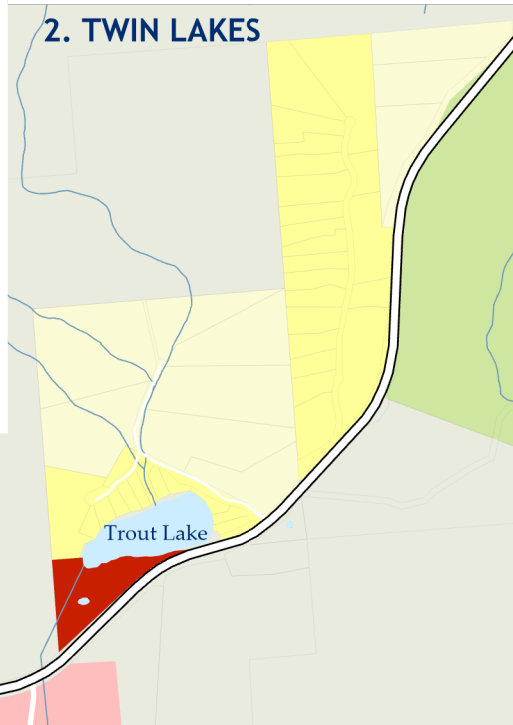
Schedule Amendments: Bylaw Number, Adoption Date \_\_\_\_\_



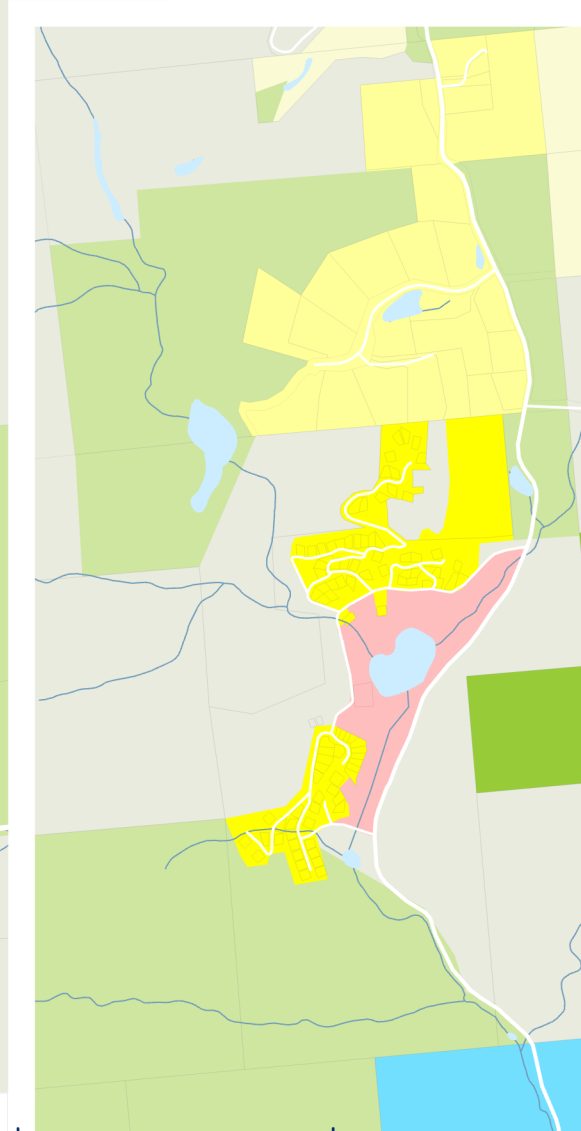
1. APEX



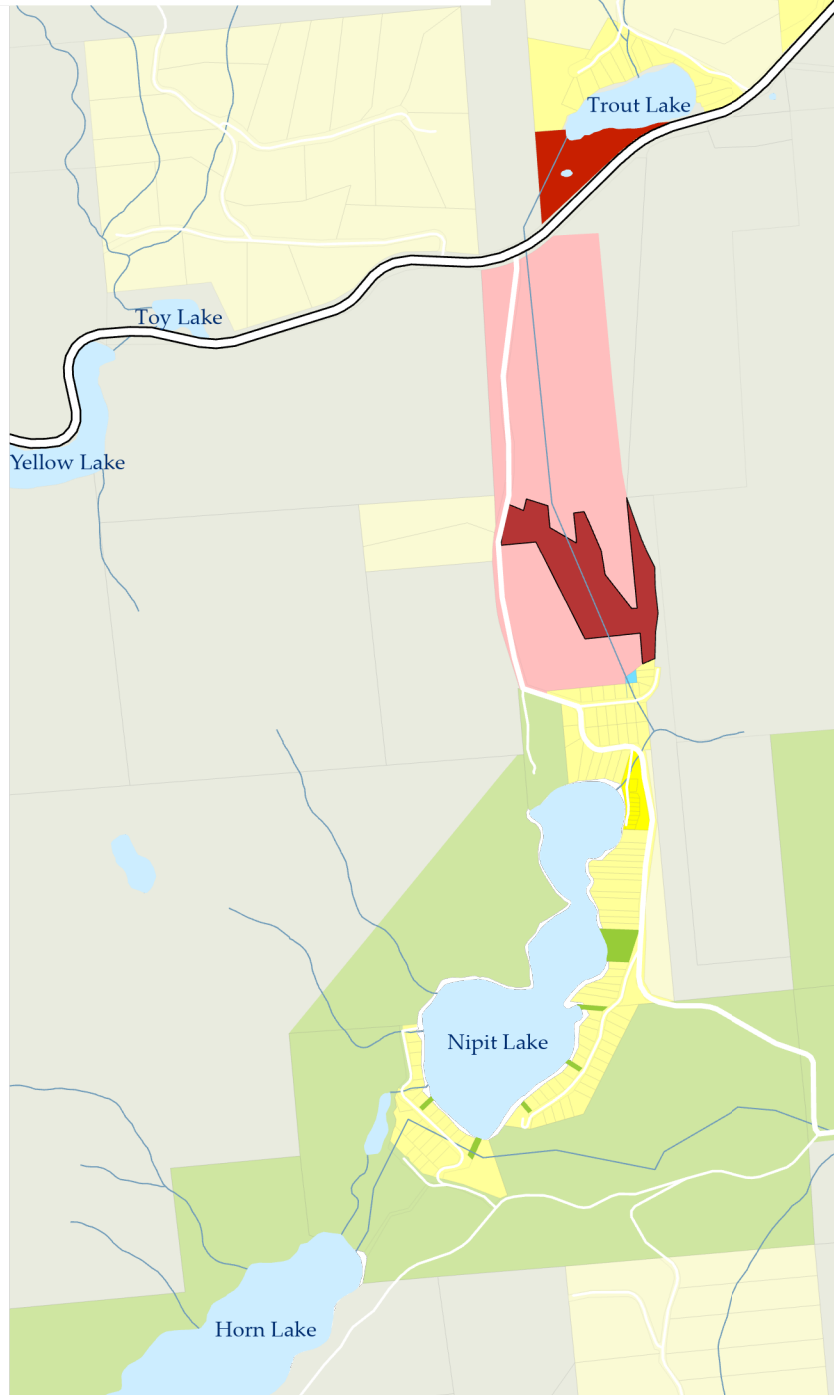
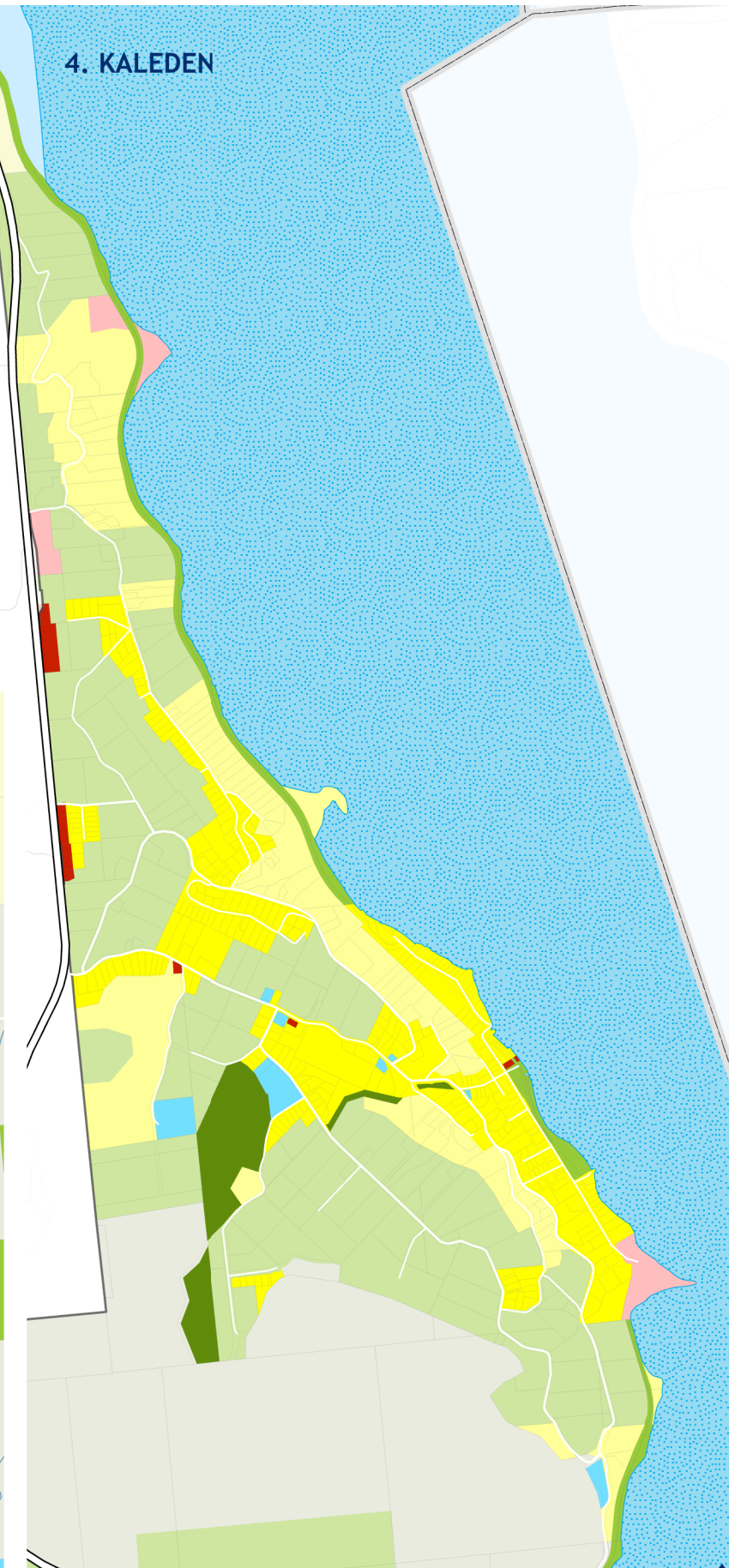
2. TWIN LAKES



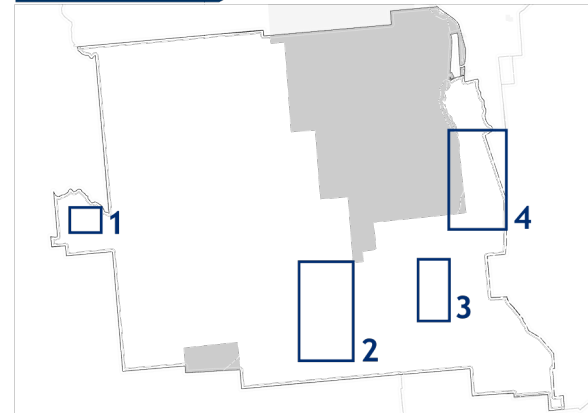
3. ST. ANDREWS



4. KALEDEN



RDOS AREA "I" OCP SCHEDULE 'B'  
OFFICIAL COMMUNITY  
PLAN MAP - INSETS



Future Land Use Designations

- AG - Agriculture
- RA - Resource Area
- LH - Large Holdings
- SH - Small Holdings
- LR - Low Density Residential
- MR - Medium Density Residential
- RMU - Residential Mixed Use
- C - Commercial
- CT - Commercial Tourist
- AI - Administrative, Cultural and Institutional
- PR - Parks, Recreation and Trails
- CA - Conservation Area
- TLVC - Twin Lakes Village Centre
- AVC - Apex Village Centre
- BL - Okanagan Basin Lake

This is Schedule 'B' (Official Community Plan Map) as referenced in the Regional District of Okanagan-Similkameen's Electoral Area "I" Official Community Plan Bylaw No. 2683, 2016

Chair

Chief Administrative Officer

Schedule Amendments: Bylaw Number, Adoption Date



0

1

2

3

4

5

6

7

Kilometers

