

Legend

- Electoral Boundary
- gis_vector GIS lakes
- Indian Reserve

Zoning

RURAL

- Resource Area (RA)
- Watershed Resource Area (WRA)
- Agriculture Three (AG3)
- Large Holdings One (LH1)
- Large Holdings Two (LH2)
- Small Holdings Two (SH2)
- Small Holdings Two Site Specific (SH2s)
- Small Holdings Three (SH3)
- Small Holdings Four (SH4)
- Small Holdings Five (SH5)

RESIDENTIAL

- Residential Single Family One (RS1)
- Residential Single Family Two (RS2)
- Manufactured Home One (RSM1)
- Kennedy Lake Comprehensive Development (CD6)

COMMERCIAL

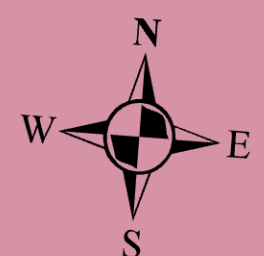
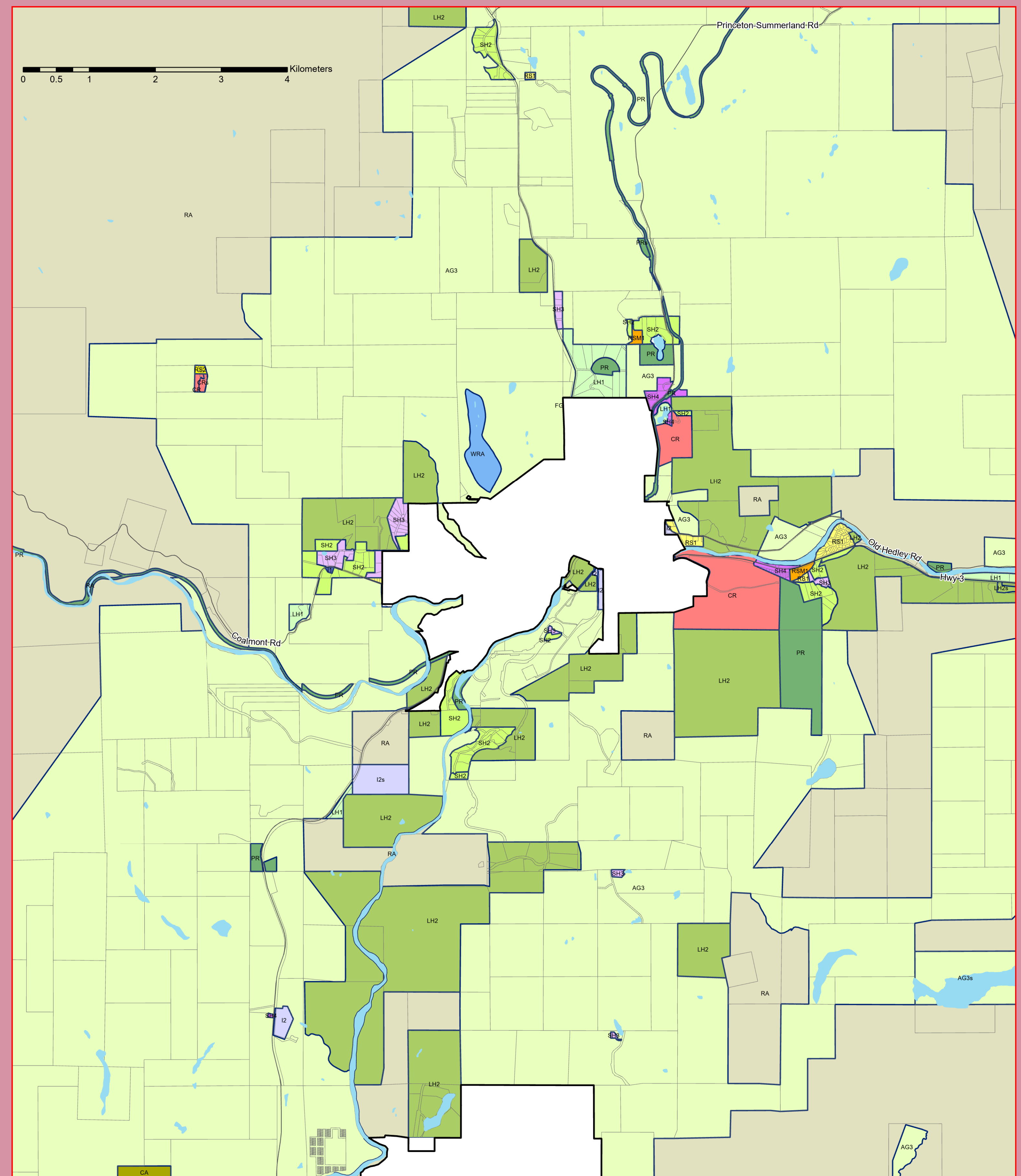
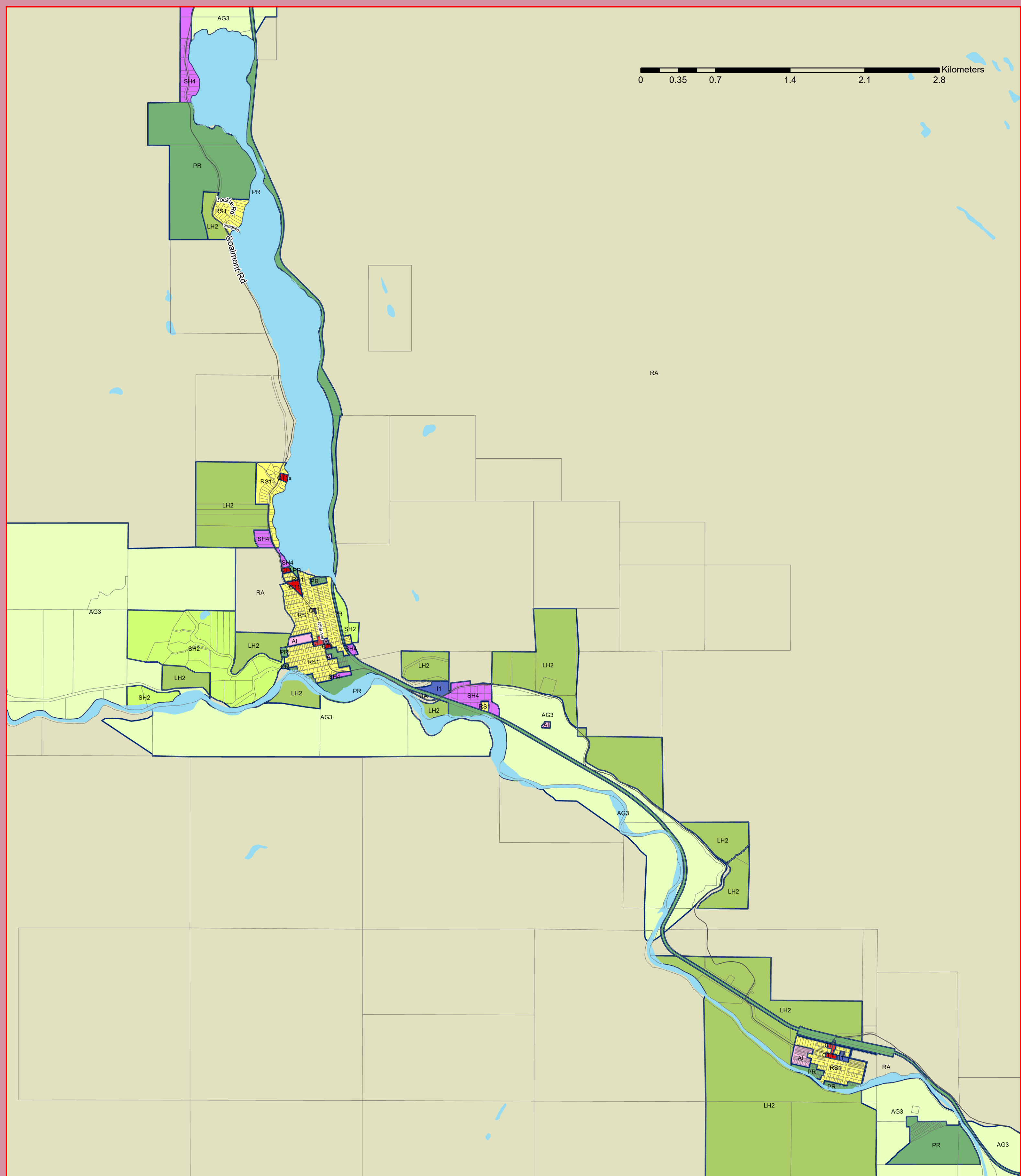
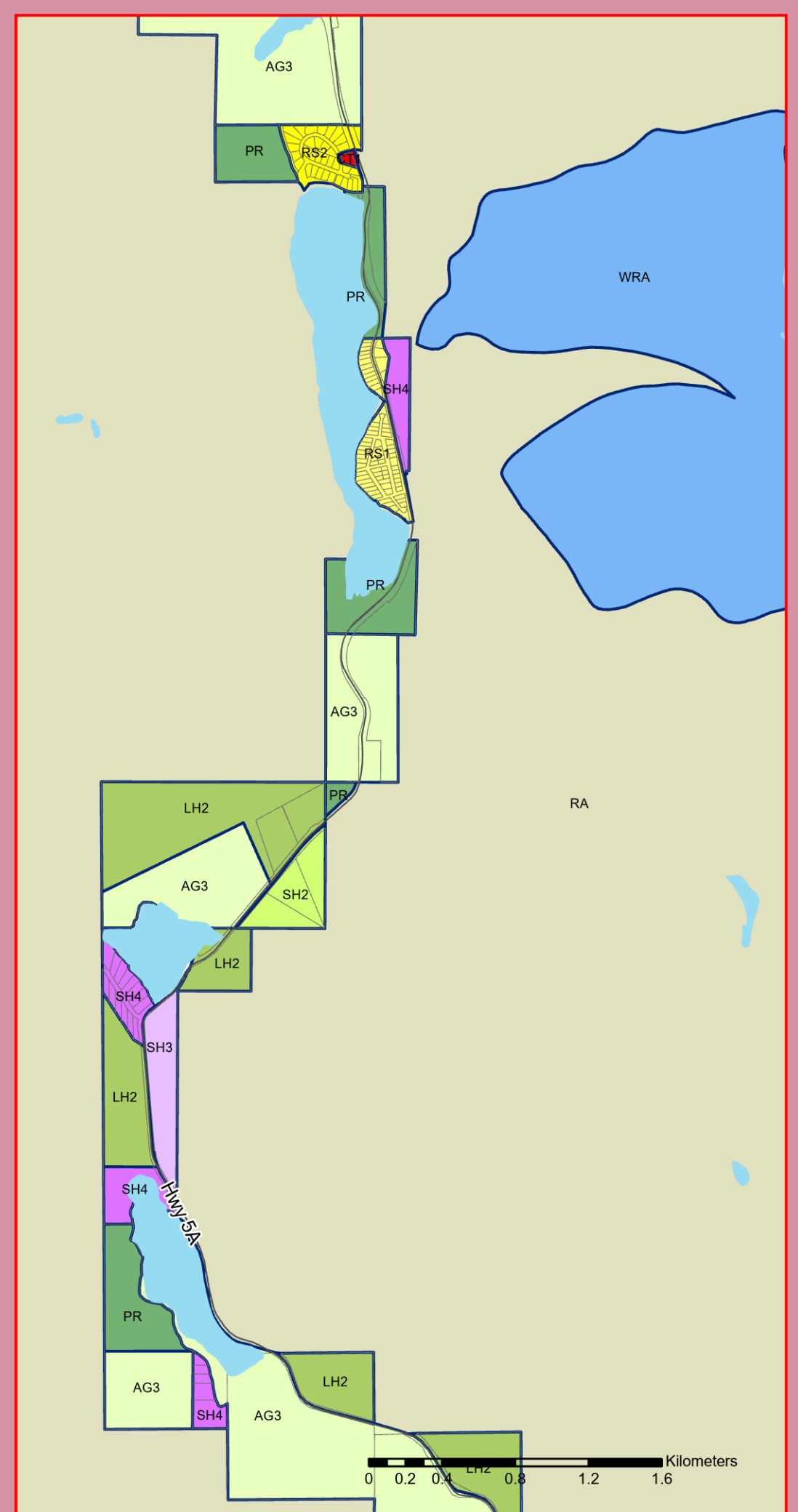
- General Commercial (C1)
- Tourist Commercial One (CT1)
- Commercial Recreation (CR)
- Kennedy Lake Resort (KLR)

INDUSTRIAL

- Industrial (Light) One (I1)
- Industrial (Heavy) Two (I2)

ADMINISTRATIVE

- Administrative and Institutional (AI)
- Parks and Recreation (PR)
- Conservation Area (CA)
- *s' denotes Site Specific



Zoning Map
Schedule '2' Electoral Area 'H' Zoning Bylaw
No. 2498, 2013.

This is Schedule '2' (Zoning Map) as referenced in the Regional District of Okanagan-Similkameen's Electoral Area 'H' Zoning Bylaw No. 2498, 2013.

Chair

Chief Administrative Officer

