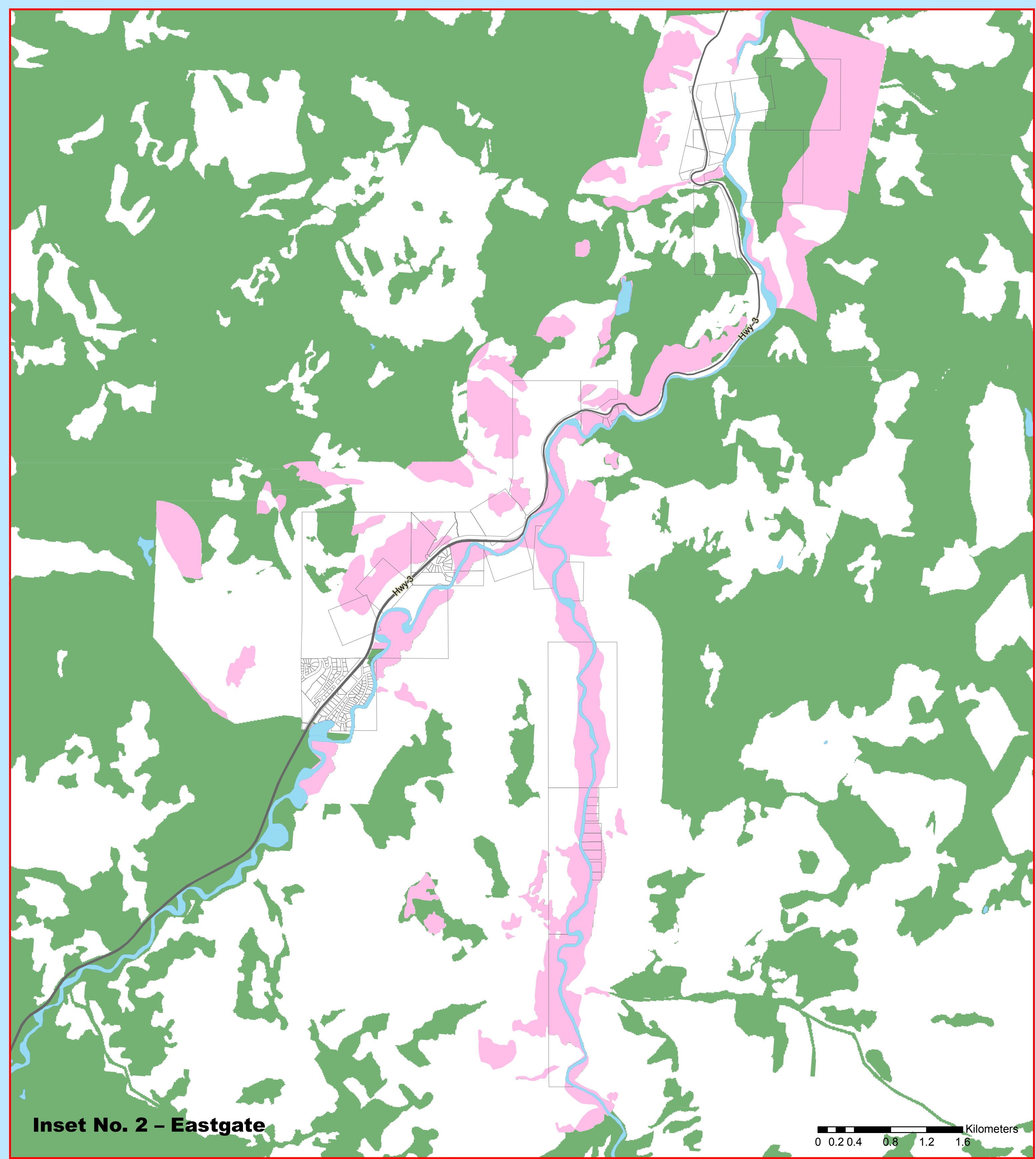
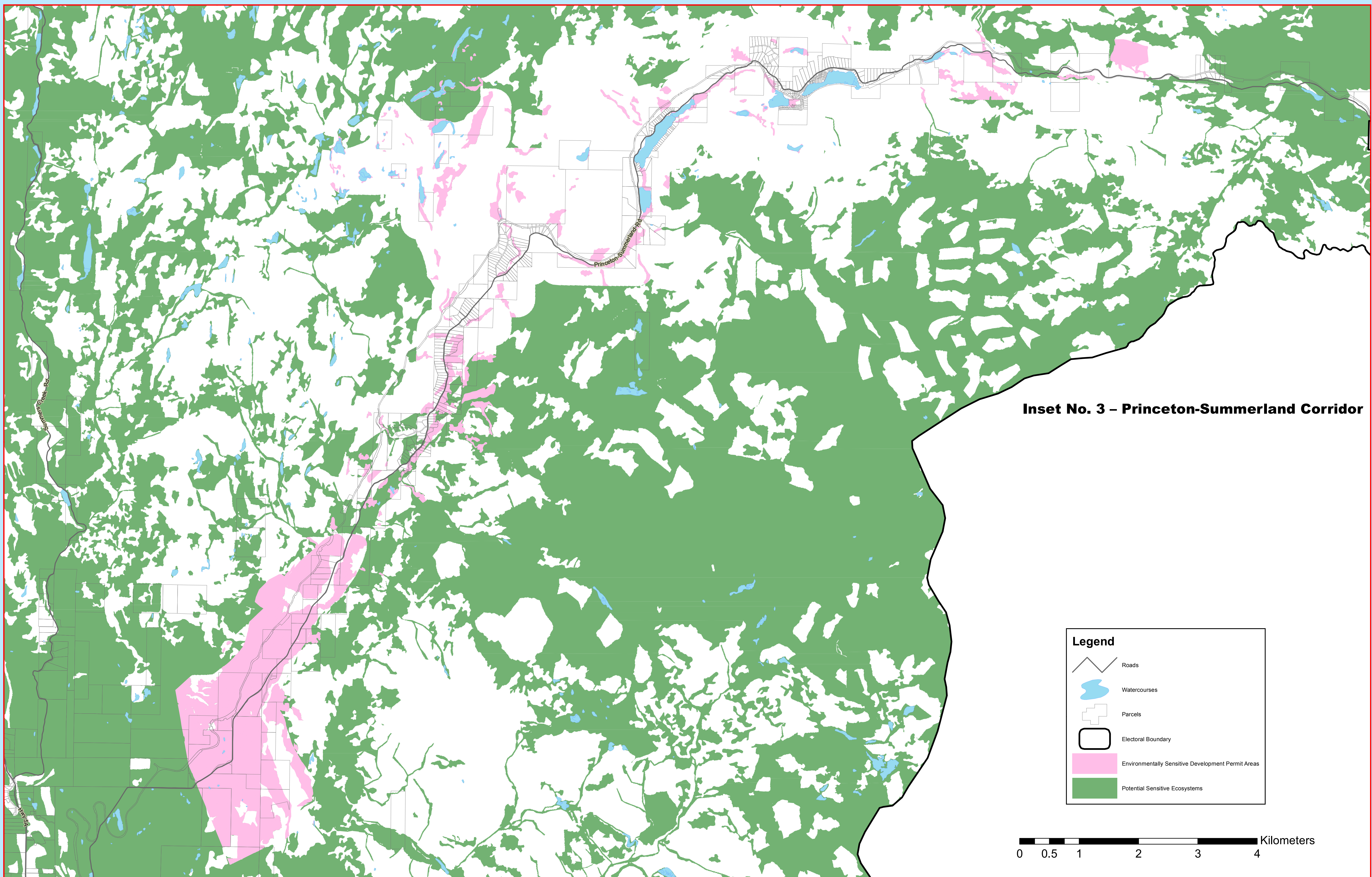


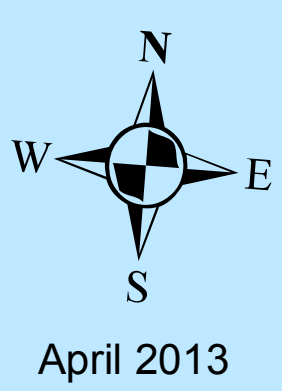
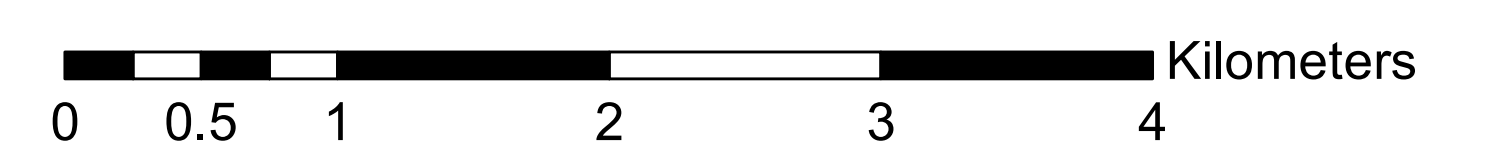
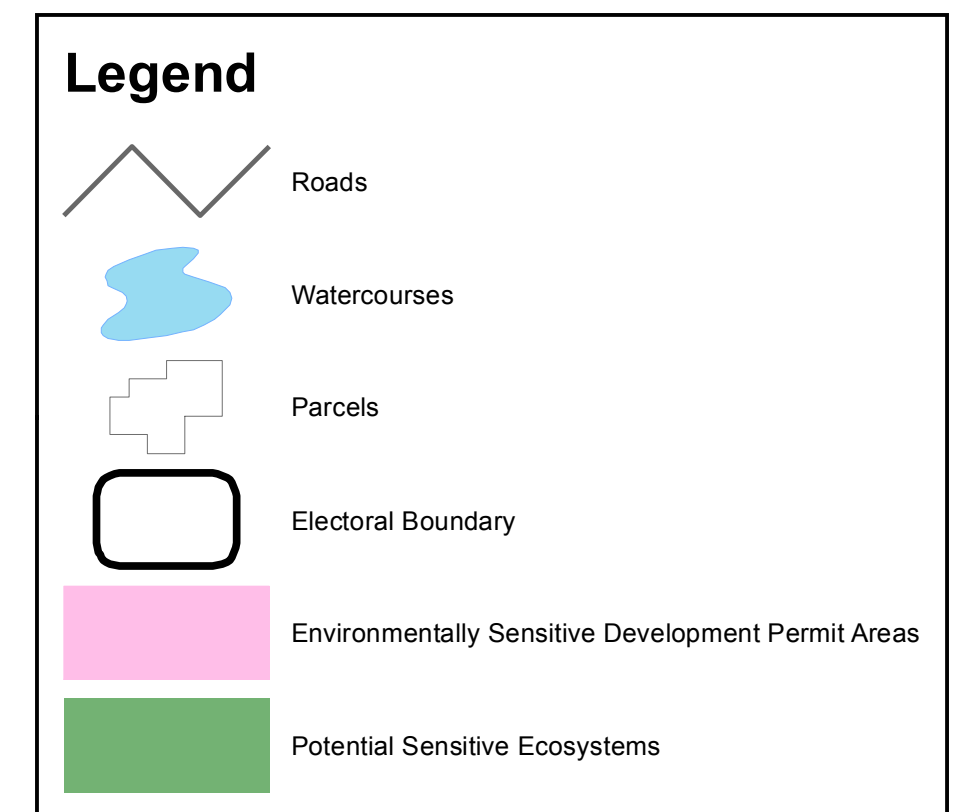
Inset No. 1 - Coalmont - Tulameen



Inset No. 2 - Eastgate



Inset No. 3 - Princeton-Summerland Corridor



April 2013

**Environmentally Sensitive Development Permit Areas
Schedule 'G'
Electoral Area 'H' Official Community Plan Bylaw No. 2497, 2013**

This is Schedule 'G' (Environmentally Sensitive Development Permit Areas) as referenced in the Regional District of Okanagan-Similkameen's Electoral Area 'H' Official Community Plan Bylaw No. 2497, 2013

Chair

Chief Administrative Officer



Sheet 2