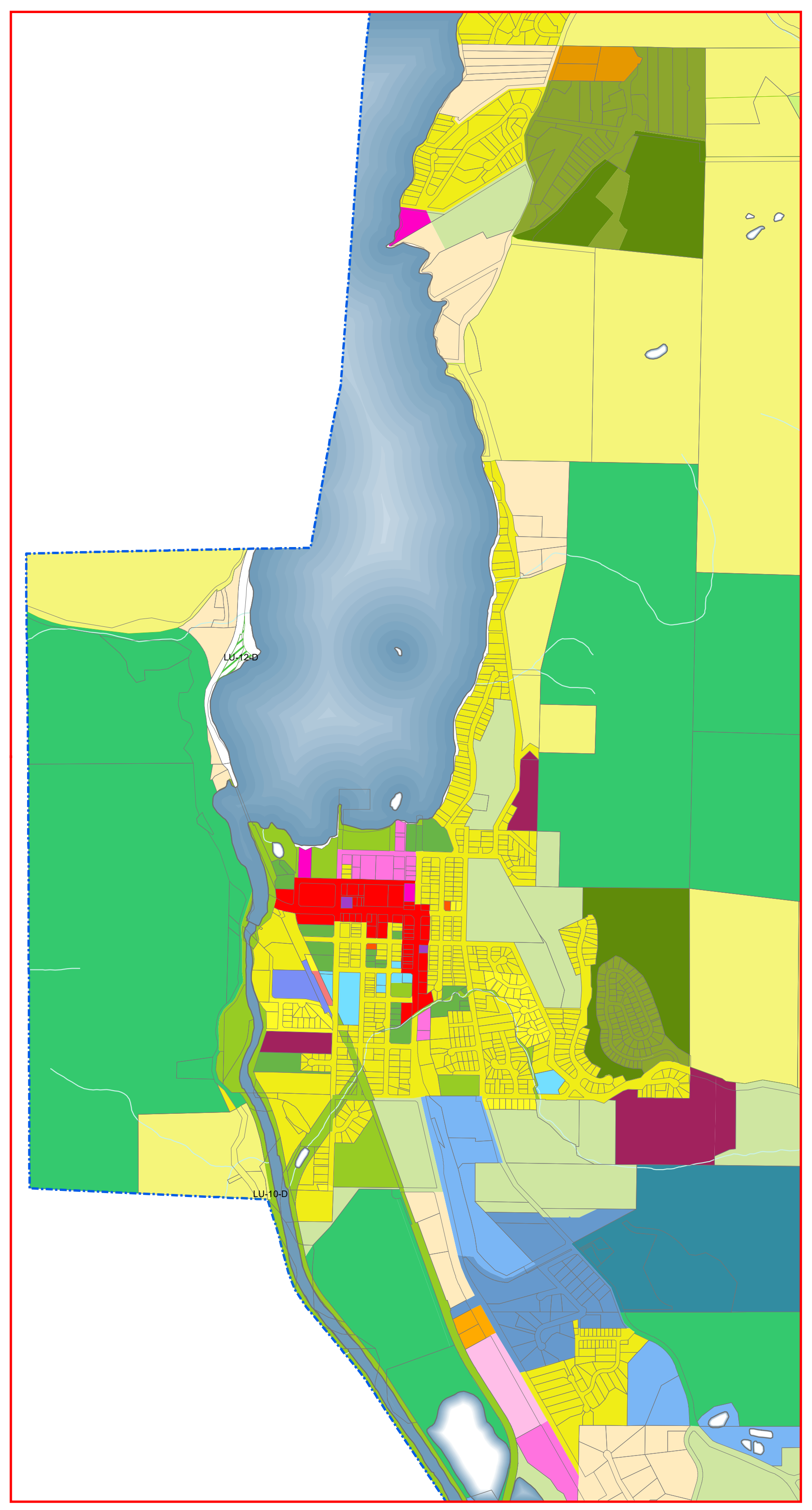
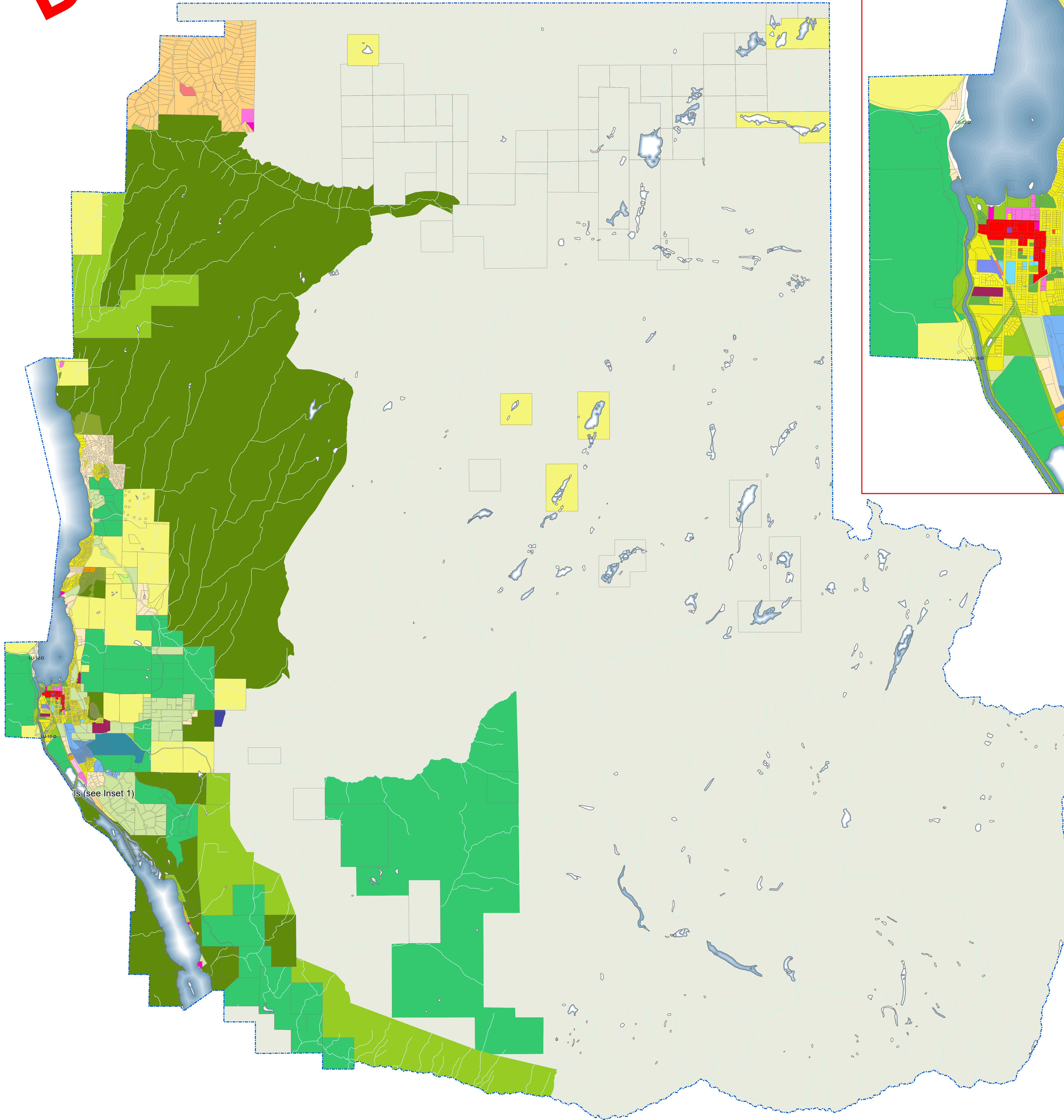


DRAFT



Legend

Land Use Contract DESIGNATIO

- LU-10-D
- LU-12-D
- Electoral Boundary

Zoning

Agriculture

- AG1; AG1s; AG1s1; AG1s2
- AG3; AG3s

Administrative, Cultural and Institutional

- AI; AIs

Conservation

- CA; CAs

Parks and Recreation

- PR

Low density Residential

- RS1s; RS1
- RS3
- RS2; RS2s

Medium Density Residential

- RM1s; RM1
- RSM1; RSM1s

Comprehensive Development

- CDs; CD
- CS1

Small Holdings

- SH1; SH1s
- SH2; SH2s
- SH3; SH3s
- SH5; SH5s

Large Holdings

- LH; LHs; LH2; LH3
- LH1; LH1s

Resource Area

- RA; RA

Industrial

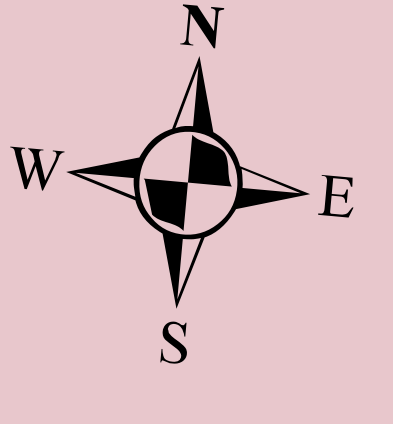
- I1; I1s
- I2; I2s
- I3
- I4
- I5

Commercial

- C3s; C3
- C4s; C4
- C6
- C7

Commercial Tourism

- CT1; CT1s
- CT4s; CT4



Zoning Map
Schedule 2 – Electoral Area 'D2' Zoning Bylaw No. 2455, 2008.



This is Schedule '2' (East Skaha Vaseux Zoning Map) as referenced in the Regional District of Okanagan-Similkameen's Amendment Bylaw No. 2455, 2008.

Chair _____ Chief Administrative Officer _____

