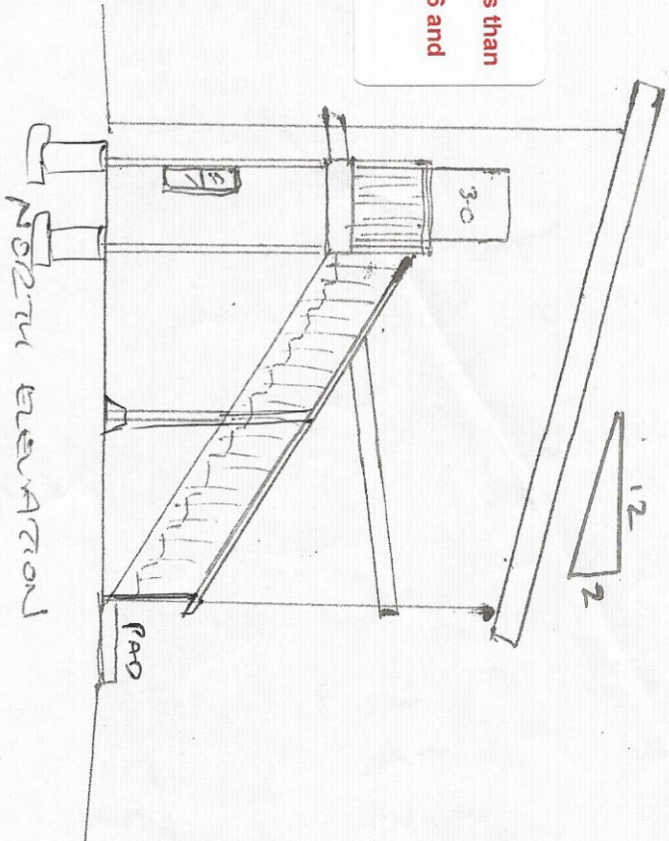
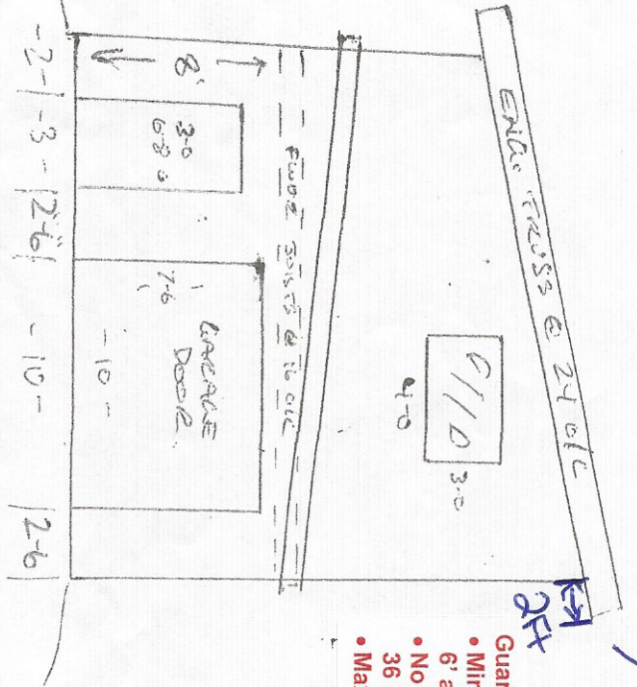


FRONT ELEVATION (EAST)  
- 30 -

REAR ELEVATION (WEST)

- Guard required for balcony:
- Min. 42" high (Min. 36" high if less than 6' above grade)
  - No horizontal members between 6 and 36 inches
  - Maximum 4" spacing of uprights



South Elevation

NORTH ELEVATION