

PROJECT

10230 - 81st STREET,
 OSOYOOS, BC

ISSUED

A Issued for DP/FP 03 AUG 21

REVISIONS

NOTES

Exterior Finishes

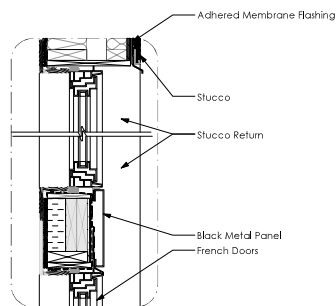
1. Standing seam metal roofing (Typ)
2. Cultured stone veneer cladding
3. Smooth face stucco cladding
4. Wood-grain 1x8 aluminum sill
5. Black metal panel
6. Black vinyl/wood (MASS Compliant)
7. Newtech wood partition beams, colour: black/iron
8. Face post
9. Cast concrete window sill within Stone Wall
10. Integrated gutter
11. 2x10 Bargeboard
12. Stained steel wood entry door
13. Metal fireplace chimney (min. 3' above highest ridge)
14. Tempered glass railing
15. Black metal railing

DRAWING

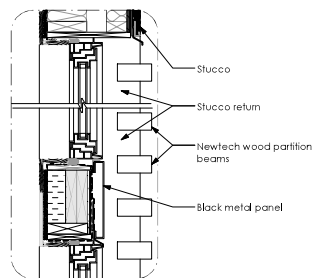
North East & North West Elevations

DRAWN BY: MM SHEET:
 CHECKED BY: KA
 SCALE: 1/4"=1'-0"
 DATE: 01 MAY 21

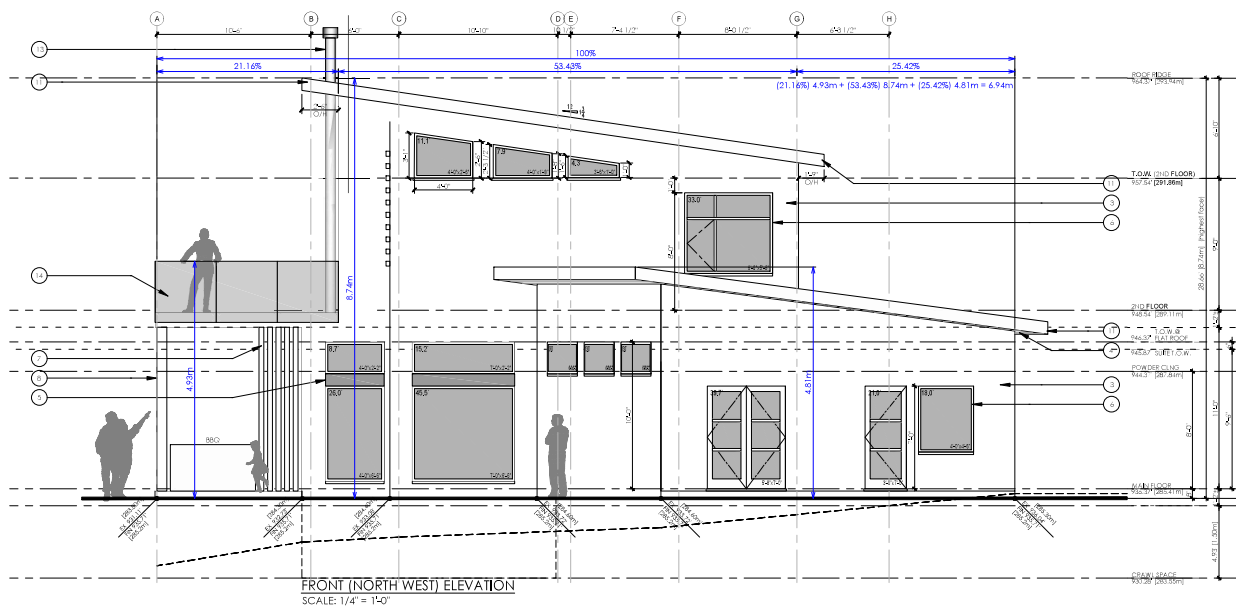
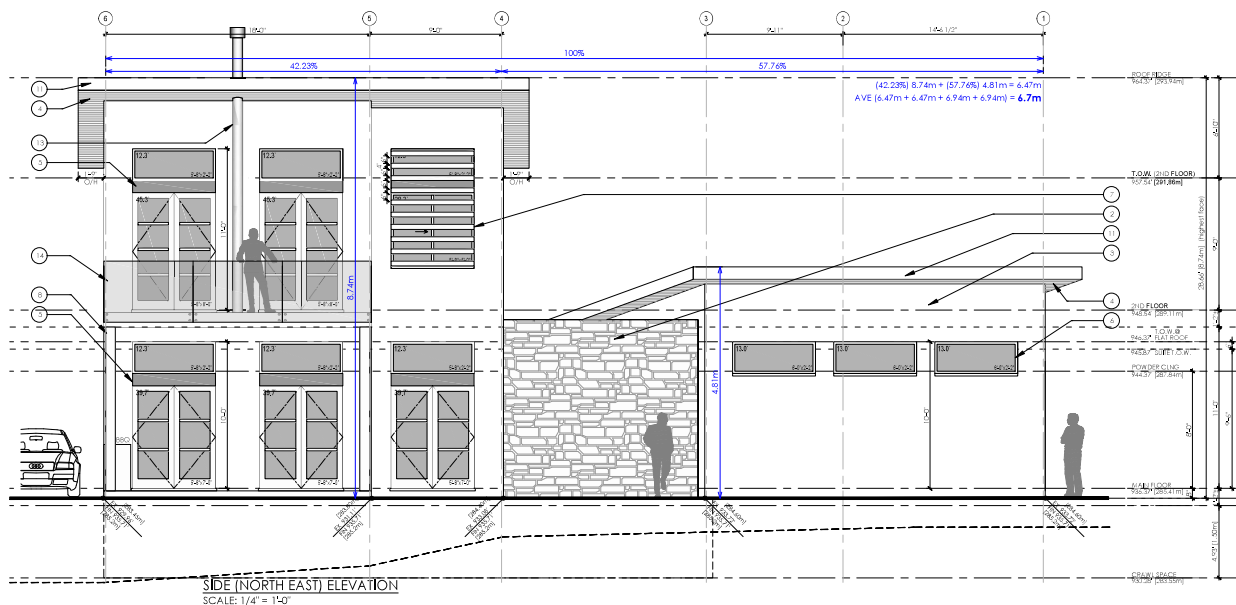
A2.1



1 Recessed Doors Detail
 1 1/2" = 1'-0"



2 Master Ensuite Window Det.
 1 1/2" = 1'-0"



10230 - 81st STREET,
 OSOYOOS, BC

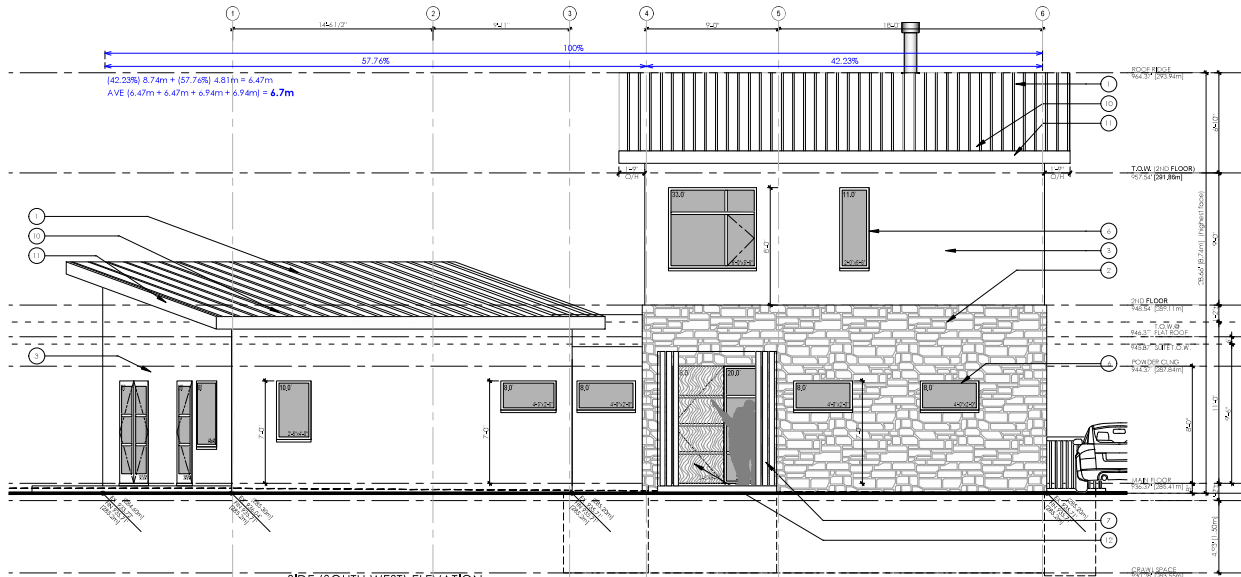
ISSUED
 A - Issued for DP/FP 11 JUL 21

REVISIONS

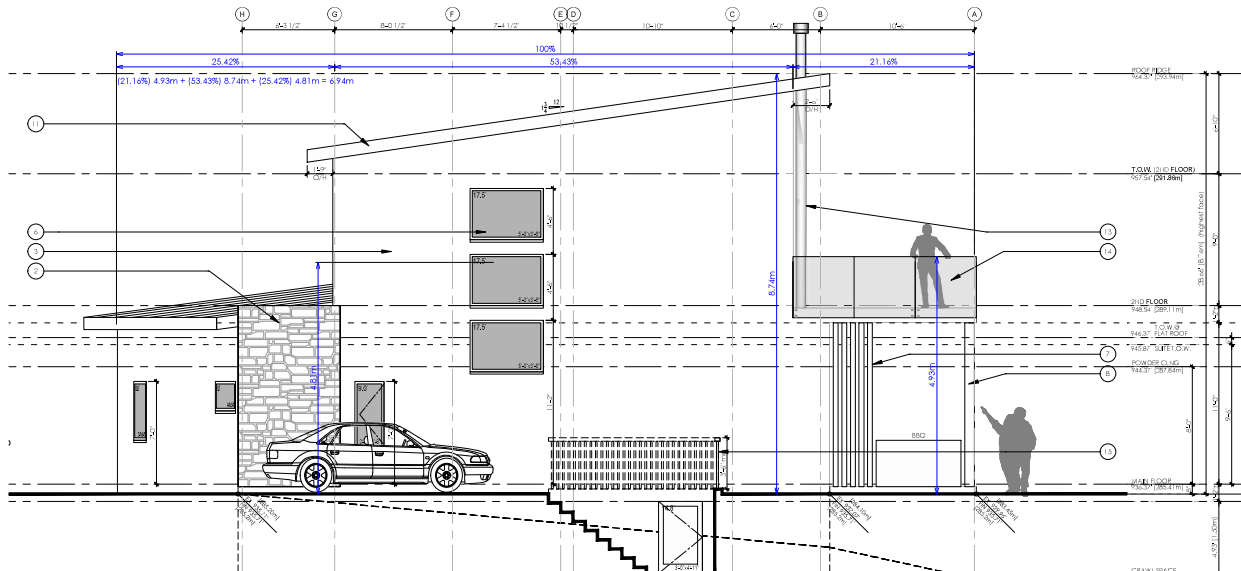
NOTES

Exterior Finishes

1. Standing seam metal roofing (Typ)
2. Cultured stone veneer cladding
3. Smooth face stucco cladding
4. Wood-grain look dimension offit
5. Black metal paint
6. Black vinyl/seludown (MASS Compliant)
7. Heavy-duty wood partition beams, colour: black/iron
8. Face post
9. Cast concrete window sill within Stone Wall
10. Integrated gutter
11. 2x10 Bargeboard
12. Stained soft wood entry door
13. Metal fireplace chimney (min. 3' above highest ridge)
14. Tempered glass railing
15. Black metal railing



SIDE (SOUTH WEST) ELEVATION
 SCALE: 1/4" = 1'-0"



REAR (SOUTH EAST) ELEVATION
 SCALE: 1/4" = 1'-0"

DRAWING

South West & South East Elevations

DRAWN BY: MM SHEET:
 CHECKED BY: KA
 SCALE: 1/4" = 1'-0"
 DATE: 01 MAY 21