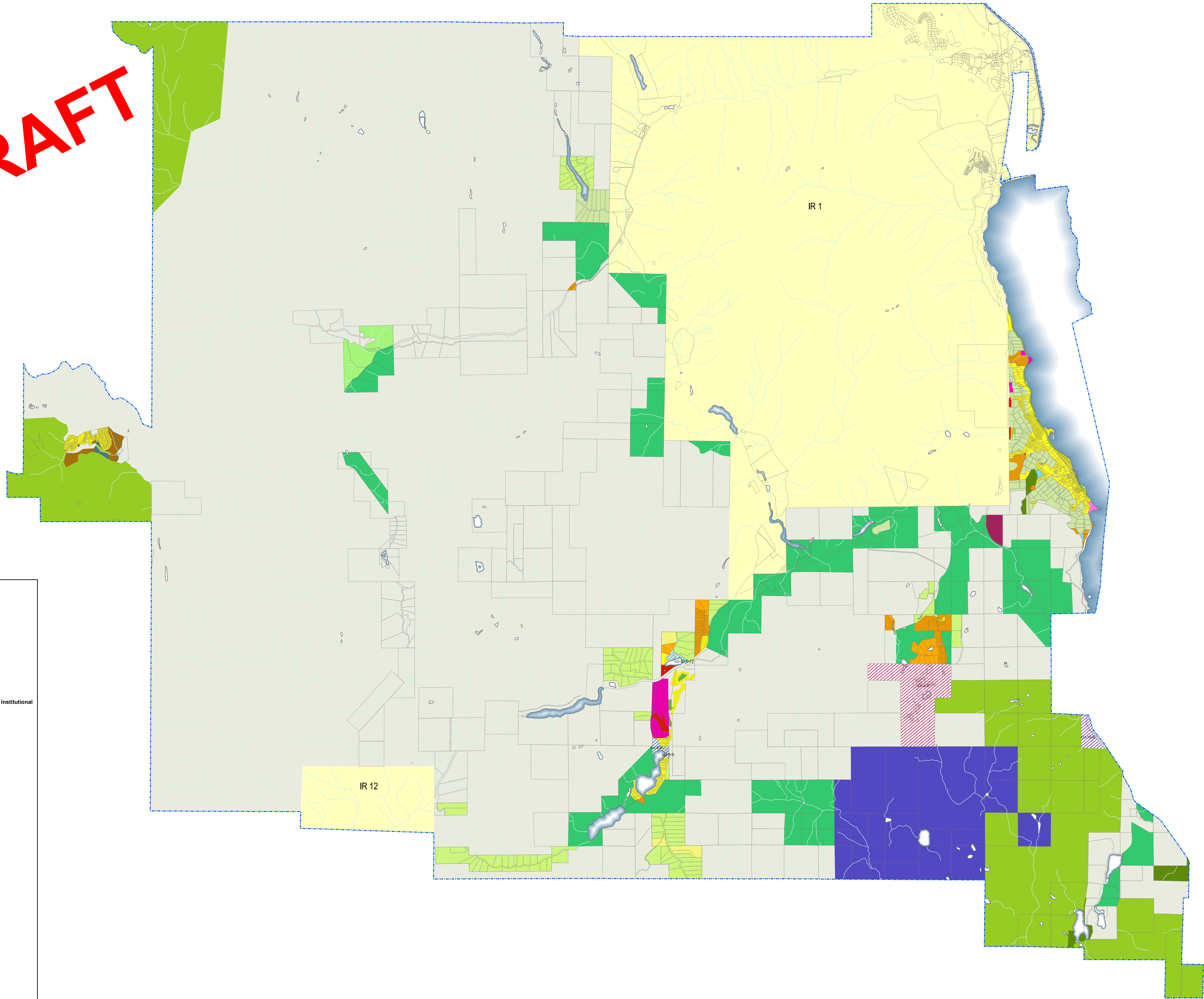


DRAFT

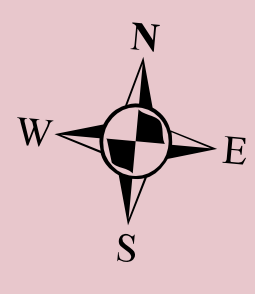


Legend

- Electoral Boundary
- Indian Reserve
- Land Use Contract DESIGNATIO**
- LU-10-D
- LU-23-D-77
- LU-6-D
- LU-9-D
- Zoning**
- Agriculture**
- AG1; AG1s; AG1s1; AG1s2
- AG3; AG3s
- Administrative, Cultural and Institutional**
- AI; AIs
- CRA
- Conservation**
- CA; CAs
- Parks and Recreation**
- PR
- Low density Residential**
- RS1s; RS1
- RS2; RS2s
- RS4s; RS4
- Medium Density Residential**
- RM1s; RM1
- RM3
- RSM1; RSM1s
- Residential Mixed Use**
- RMJs; RMJ
- Small Holdings**
- SH2; SH2s
- SH3; SH3s
- Large Holdings**
- LH; LHs; LHs2; LHs3
- LH1; LHs1
- LH2
- Resource Area**
- RA; RA
- Industrial**
- I1; I1s
- Commercial**
- C1; C1s
- C4s; C4
- Commercial Tourism**
- CT1; CT1s
- CT4s; CT4
- CT6

Zoning Map
Schedule 2 – Electoral Area 'D1' Zoning Bylaw No. 2473, 2008.

This is Schedule '2' (Kaleden-Apex Southwest Sector Zoning Map) as referenced in the Regional District of Okanagan-Similkameen's Bylaw No. 2453, 2008.



Chair _____
Chief Administrative Officer _____

