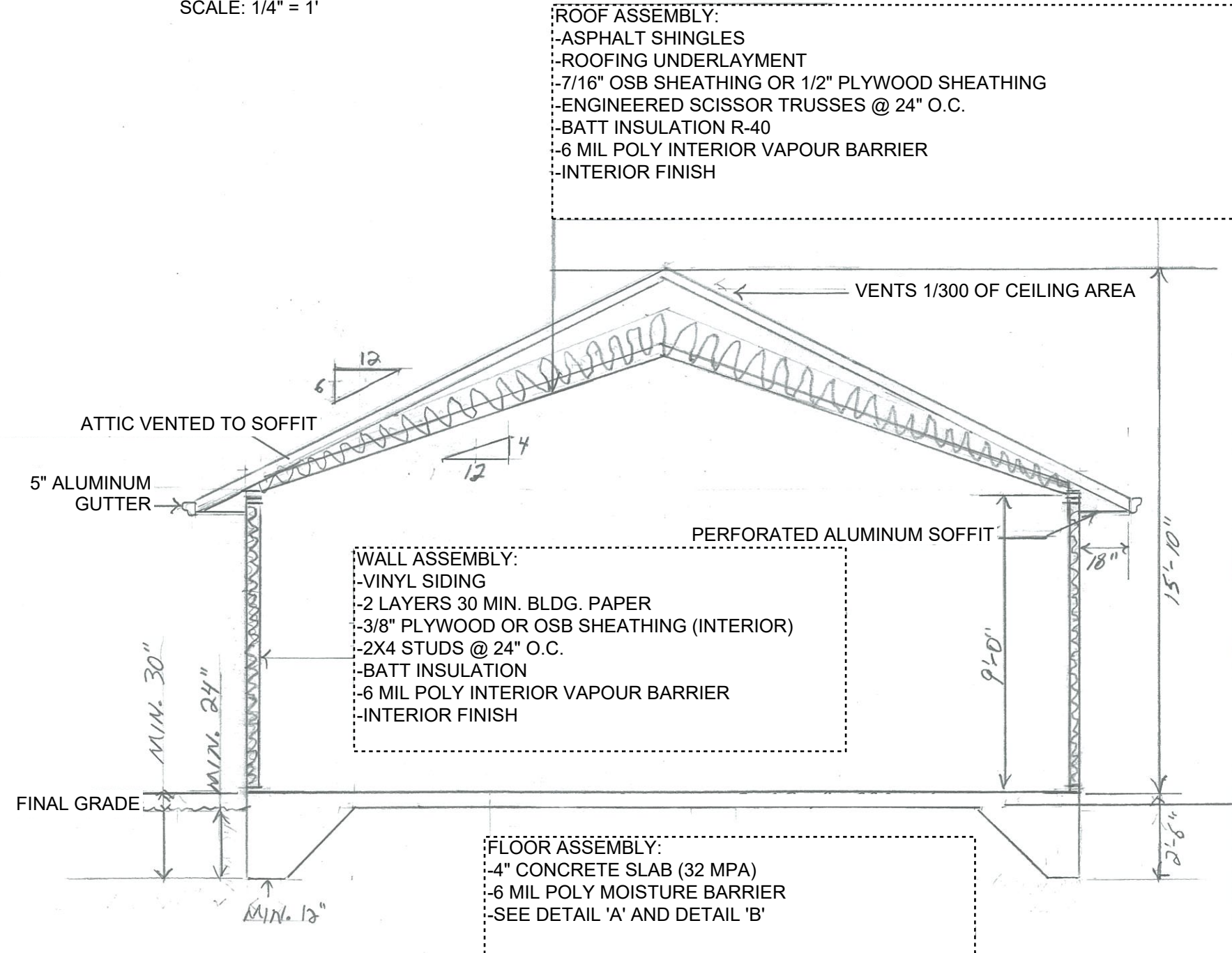


165 LAKEHILL ROAD, KALEDEN, BC  
**GARAGE REBUILD**

JASON ADAM  
 CROSS SECTION DRAWING

NOV 19, 2022

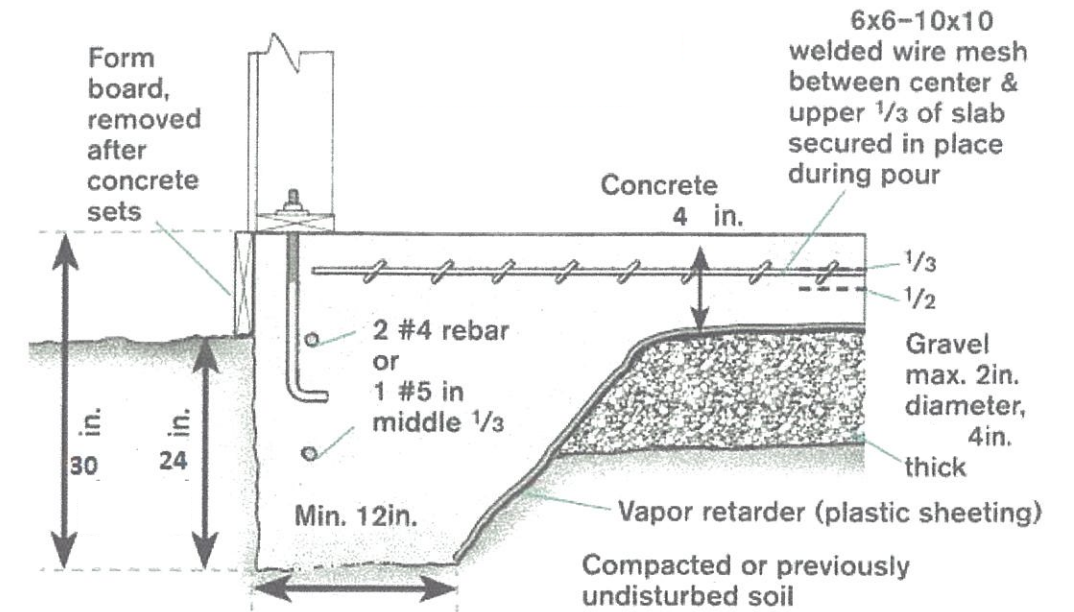
SCALE: 1/4" = 1'



**NOTES:**

- 3-2"x10" HEADERS OVER GARAGE DOORS
- 2-2"x8" HEADERS OVER WINDOW LINTELS

**DETAIL 'A'**



Anchorage is to be provided by fastening the sill plate to the foundation with not less than 12.7 mm (1/2") diameter anchor bolts spaced not more than 2.4 m (7.8') o.c.

**DETAIL 'B'**

