

# RESPONSE SUMMARY

## TEMPORARY USE PERMIT NO. H2020.009-TUP

Approval Recommended for Reasons  
Outlined Below

Interests Unaffected

Approval Recommended Subject to  
Conditions Below

Approval Not Recommended  
Due to Reasons Outlined Below

Signature: 

Signed By: B. Lyle Thomas  
CAO

Agency: Town of Princeton

Title: Aug. 10, 2020

Date: Aug. 10, 2020

2020-08-06

H2020.009-TUP

Hello RDOS Planners,

Thank you for your referral regarding installing a radio telescope on the property legally described as DISTRICT LOT 1838 SIMILKAMEEN DIVISION YALE DISTRICT EXCEPT THAT PART THEREOF OUTLINED RED ON PLAN B1374, PID 011458321. Please review the screenshot of the property below (outlined in yellow) and notify me immediately if it does not represent the property listed in your referral.

### Results of Provincial Archaeological Inventory Search

According to Provincial records, previously recorded archaeological sites DiRd-3 and DiRd-14 are recorded on the property.

Given the subsurface nature of most archaeological deposits, boundaries of archaeological sites are difficult to determine without subsurface testing. Therefore, any mapped boundaries are approximate, and it is possible that the sites are more or less extensive than currently mapped.

In addition to the archaeological sites, archaeological potential mapping for the area indicates the property has high to moderate potential to contain unknown/unrecorded archaeological deposits, as indicated by the brown (high potential) and beige (moderate potential) areas shown in the screenshot below.

### Archaeology Branch Advice

DiRd-3 and DiRd-14 are protected under the *Heritage Conservation Act* (HCA) and must not be damaged or altered without a Provincial heritage permit issued by the Archaeology Branch.

If land-altering activities (e.g., home renovations, property redevelopment, landscaping, service installation) are planned within the protected archaeological sites (red areas shown in the screenshot below), a Provincial heritage permit is required. Permit applications are available on the [Archaeology Branch website](#). Completing a permit application usually requires archaeological expertise, and an archaeological impact assessment (AIA) may be required before a permit can be issued. Most applicants will therefore engage an eligible consulting archaeologist to review proposed activities, verify archaeological records, and work with the Archaeology Branch on the applicant's behalf to identify permit requirements, prepare permit application(s), and conduct any required archaeological study.

If land-altering activities are planned outside of the archaeological sites (red areas shown in the screenshot below), a Provincial heritage permit may not be required prior to commencement of those activities. However, there is high potential for the archaeological sites to extend beyond the limits indicated on the screenshot below and/or for other unknown archaeological deposits to exist on the property, and a Provincial heritage permit will be required if archaeological deposits are exposed and/or impacted during land-altering activities. Unpermitted damage or alteration of a protected archaeological site is a contravention of the HCA and requires that land-altering activities be halted until the contravention has been investigated and permit requirements have been established. This can result in significant project delays.

Therefore, the Archaeology Branch strongly recommends engaging an eligible consulting archaeologist prior to any land-altering activities. The archaeologist will review the proposed activities, verify archaeological records, and possibly conduct a walk-over and/or an archaeological impact assessment

(AIA) of the project area to determine whether the proposed activities are likely to damage or alter any unrecorded portions of the protected archaeological sites.

Please notify all individuals involved in land-altering activities (e.g., owners, developers, equipment operators) that if archaeological material is encountered during development, they **must stop all activities immediately** and contact the Archaeology Branch for direction at 250-953-3334.

### **Rationale and Supplemental Information**

- A protected archaeological site is located on the subject property, and there is high potential for previously unidentified portions of the site to extend to other parts of the property.
- Archaeological sites are protected under the *Heritage Conservation Act* and must not be damaged or altered without a Provincial heritage permit issued by the Archaeology Branch. This protection applies even when archaeological sites are previously unidentified or disturbed.
- If a permit is required, be advised that the permit application and issuance process takes approximately 8-12 weeks; the permit application process includes referral to First Nations and subsequent engagement.
- The Archaeology Branch must consider numerous factors (e.g., proposed activities and potential impacts to the archaeological site[s]) when determining whether to issue a permit and under what terms and conditions.
- The Archaeology Branch has the authority to require a person to obtain an archaeological impact assessment, at the person's expense, in certain circumstances, as set out in the *Heritage Conservation Act*.
- Occupying an existing dwelling or building without any land alteration does not require a Provincial heritage permit.

### **How to Find an Eligible Consulting Archaeologist**

An eligible consulting archaeologist is one who can hold a Provincial heritage permit to conduct archaeological studies. To verify an archaeologist's eligibility, ask an archaeologist if he or she can hold a permit in your area, or contact the Archaeology Branch (250-953-3334) to verify an archaeologist's eligibility. Consulting archaeologists are listed on the BC Association of Professional Archaeologists website ([www.bcapa.ca](http://www.bcapa.ca)) and in local directories.

### **Questions?**

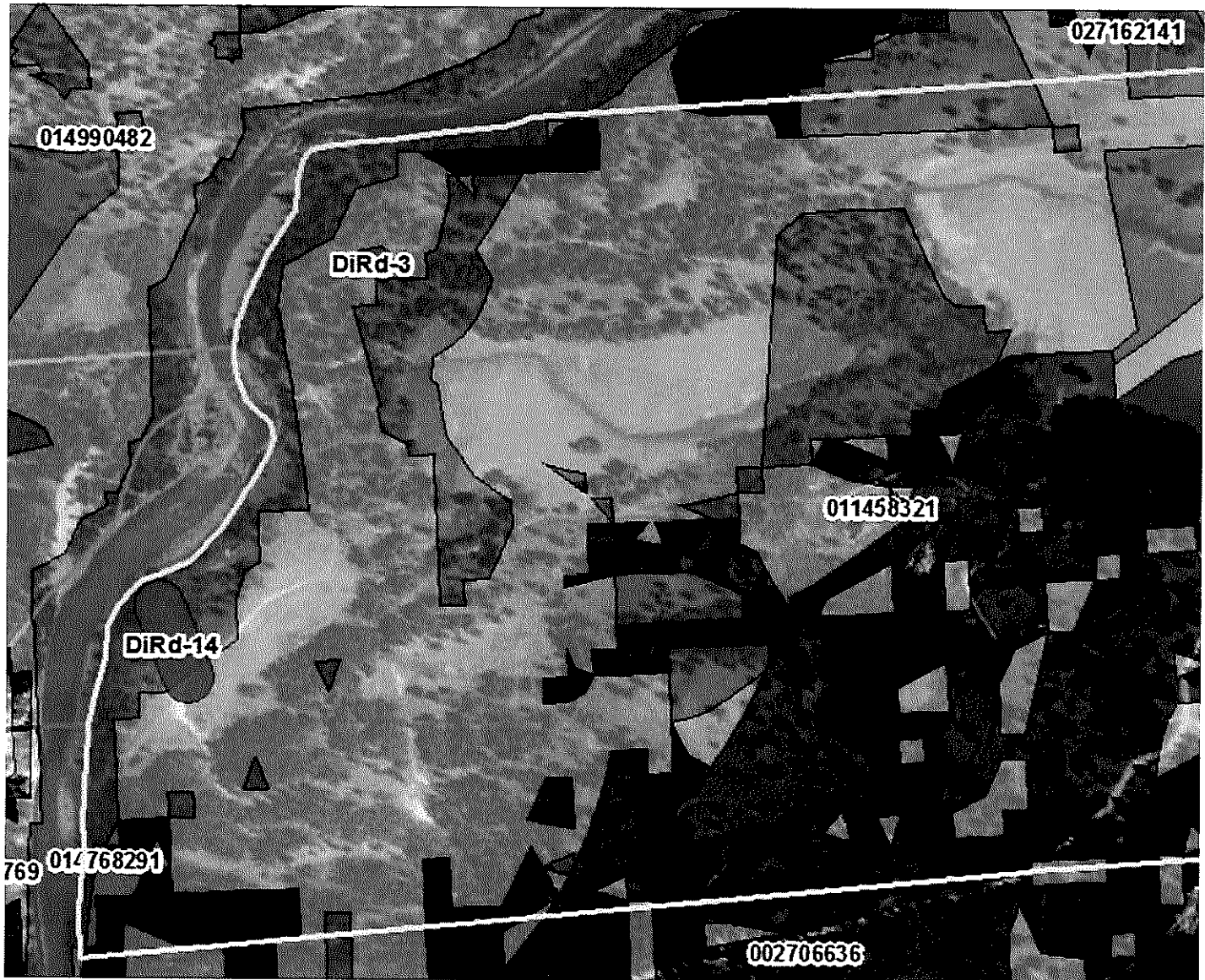
For questions about the archaeological permitting and assessment process, please contact the Archaeology Branch at 250-953-3334 or [archaeology@gov.bc.ca](mailto:archaeology@gov.bc.ca).

For more general information, visit the Archaeology Branch website at [www.gov.bc.ca/archaeology](http://www.gov.bc.ca/archaeology).

Please let me know if you have any questions regarding this information.

Kind regards,

*Diana*



*Please note that subject lot boundaries (yellow), archaeological site boundaries (red), and areas of archaeological potential (brown = high potential and beige = moderate potential) indicated on the enclosed screenshot are based on information obtained by the Archaeology Branch on the date of this communication and may be subject to error or change. Archaeological site boundaries may not be identical to actual site extent.*

**Diana Cooper**  
Archaeologist/Archaeological Site Inventory Information & Data Administrator