

This part of House
not for vacation rental use.

NEW FLOOR PLAN
BASEMENT

NEW PATIO
DOOR

WINDOW

SLIDING DOOR

WINDOW

FAMILY ROOM

BED ROOM

NEW
SECONDARY
SUITE

SNCO

NEW
WALL

The uses of rooms and areas are
approved as shown on this floor
plan. Any changes of use requires RDOS
approval.

MAR 3/17

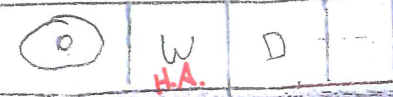
NEW
WALL

NEW
FURNACE

MECHANICAL - LAUNDRY - STORAGE

EXISTING
BATH

NEW



ATED DOOR
TO
SECONDARY
SUITE

7'-0"

16'-0"

16'-0"

PTG

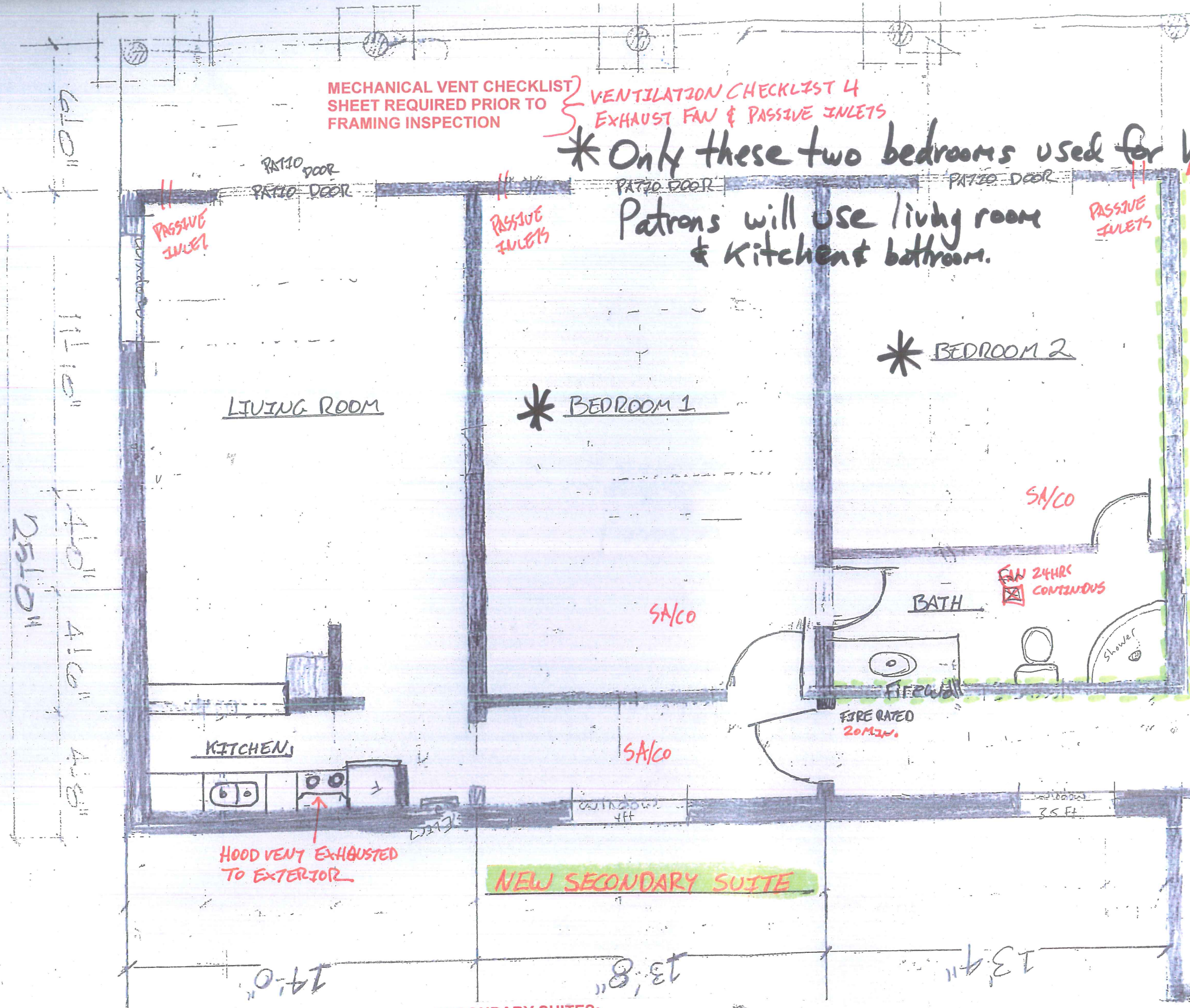
WIC - FIRE RESISTANCE WALL ASSEMBLY

MECHANICAL VENT CHECKLIST SHEET REQUIRED PRIOR TO FRAMING INSPECTION
VENTILATION CHECKLIST 4 EXHAUST FAN & PASSIVE INLETS

* Only these two bedrooms used for Vacation Rental

Patrons will use living room & kitchen & bathroom.

17 Apr 3/17
The uses of rooms and areas are approved as shown on this floor plan. Any changes of use requires RDOS approval.



SECONDARY SUITES:
Shall conform to SECTION 9.37 of the 2012 B.C. Building Code

Smoke Alarms 9.10.19
Hard wired, interconnected smoke alarms required on each storey, including basements, in each sleeping room, and in a location between the sleeping rooms and the remainder of the storey (must be located in hallway if sleeping rooms are served by a hallway).
Instructions for maintenance and care of smoke alarms are to be posted in a location readily available to occupants for reference.

Carbon Monoxide Alarms 9.32.4.2.
Required inside each bedroom or within 5 m of each bedroom door in residential occupancies containing a fuel burning appliance or a storage garage. Must be placed in each room containing a solid fuel burning appliance, have no disconnect switch and be mechanically fixed on or near the ceiling unless otherwise recommended by the manufacturer.