

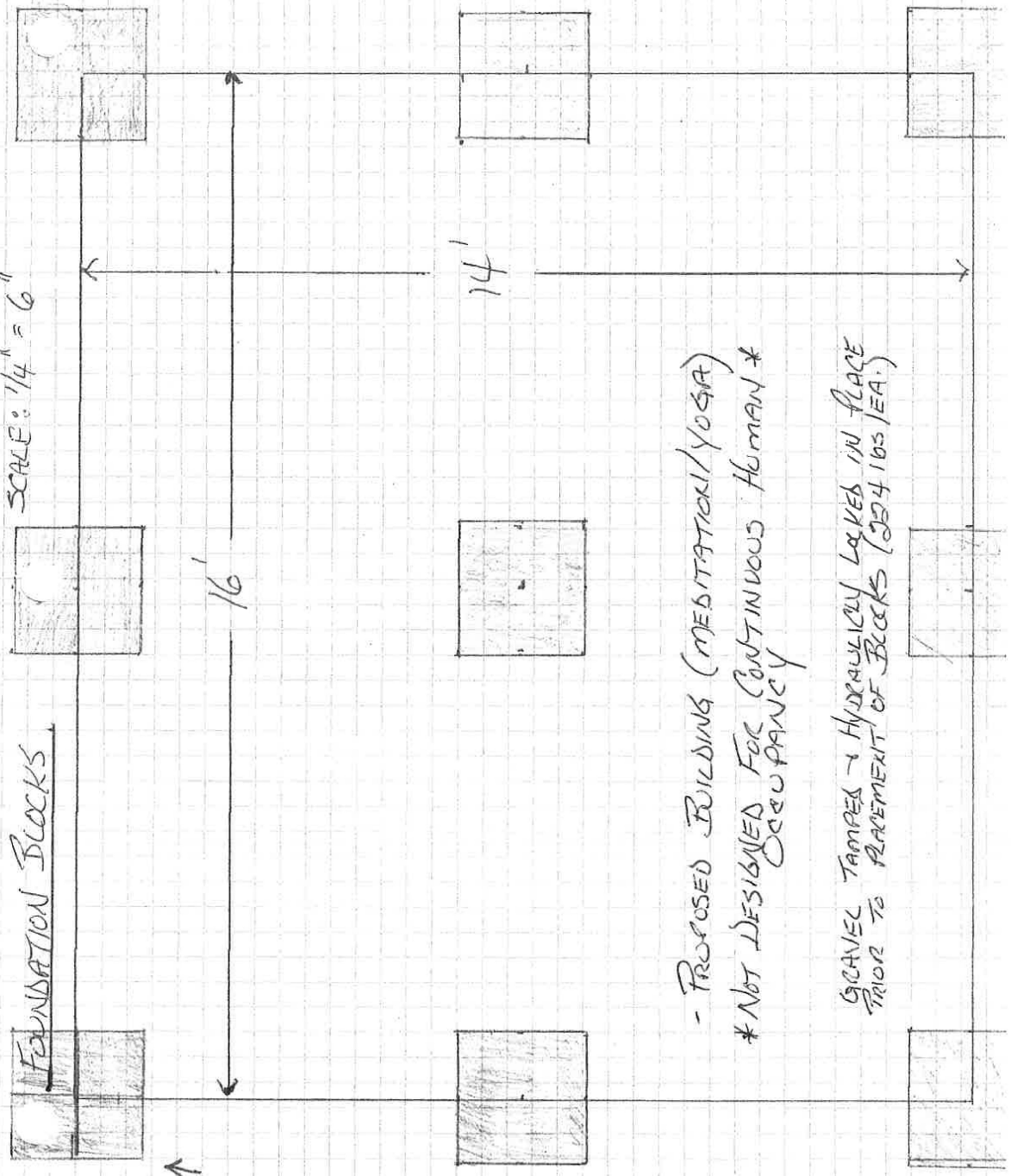
#1  
SCALE: 1/4" = 6"

FOUNDATION BLOCKS

N ↑

16'

14'



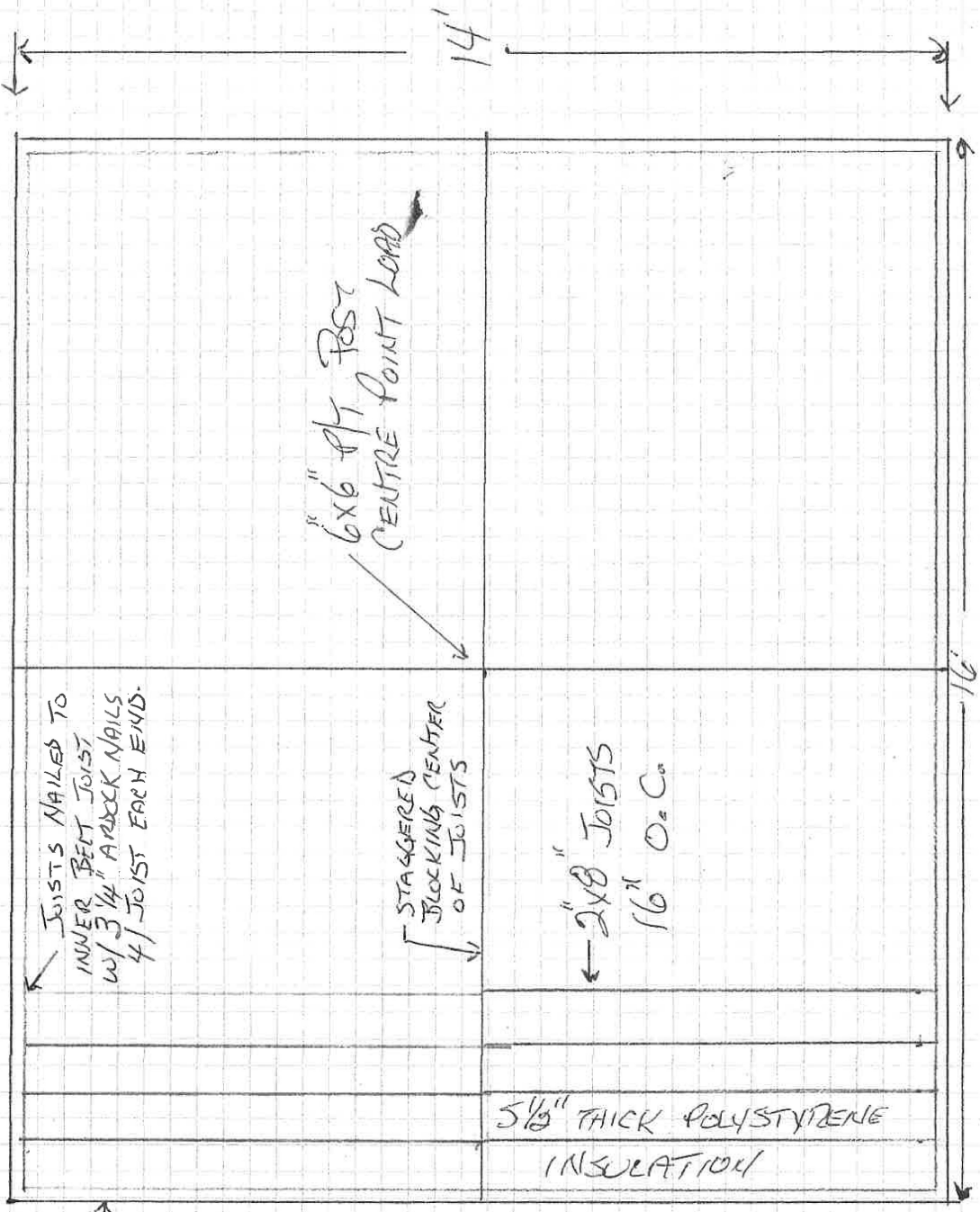
- PROPOSED BUILDING (MEDITATION/YOGA)  
\* NOT DESIGNED FOR CONTINUOUS HUMAN \*  
OCCUPANCY

GRAVEL TAMPED & HYDRAULICALLY LOCKED IN PLACE  
PRIOR TO PLACEMENT OF BLOCKS (204 LBS/EA.)

FLOOR PLAN - OPEN

SCALE: 1/4" = 6"

# 2

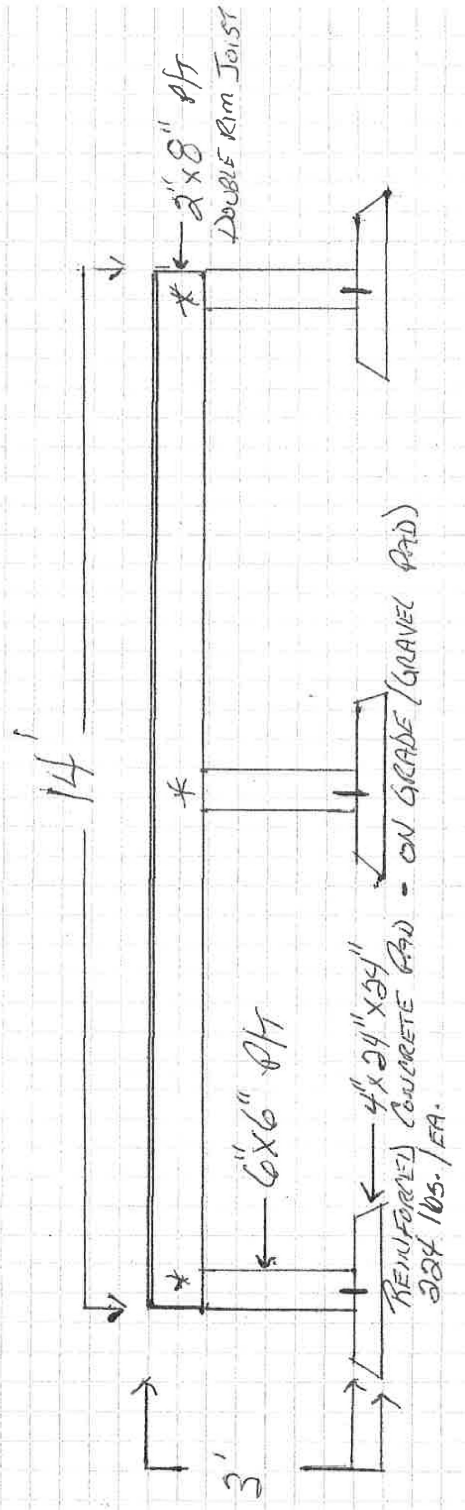


DOUBLE RIM JOIST 2x8" P/T (PRESSURE TREATED)  
W/ GALVANIZED 3/4" ANCHOR NAILS  
16" NAILING SCHEDULE

SCALE: 1/4" = 6"

#3

FOUNDATION - END VIEW (WEST)



- NOTE: DOUBLE RIM JOIST SECURED WITH 16" NAILING SCHEDULE W/ GALVANIZED 3/4" ARBOK NAILS

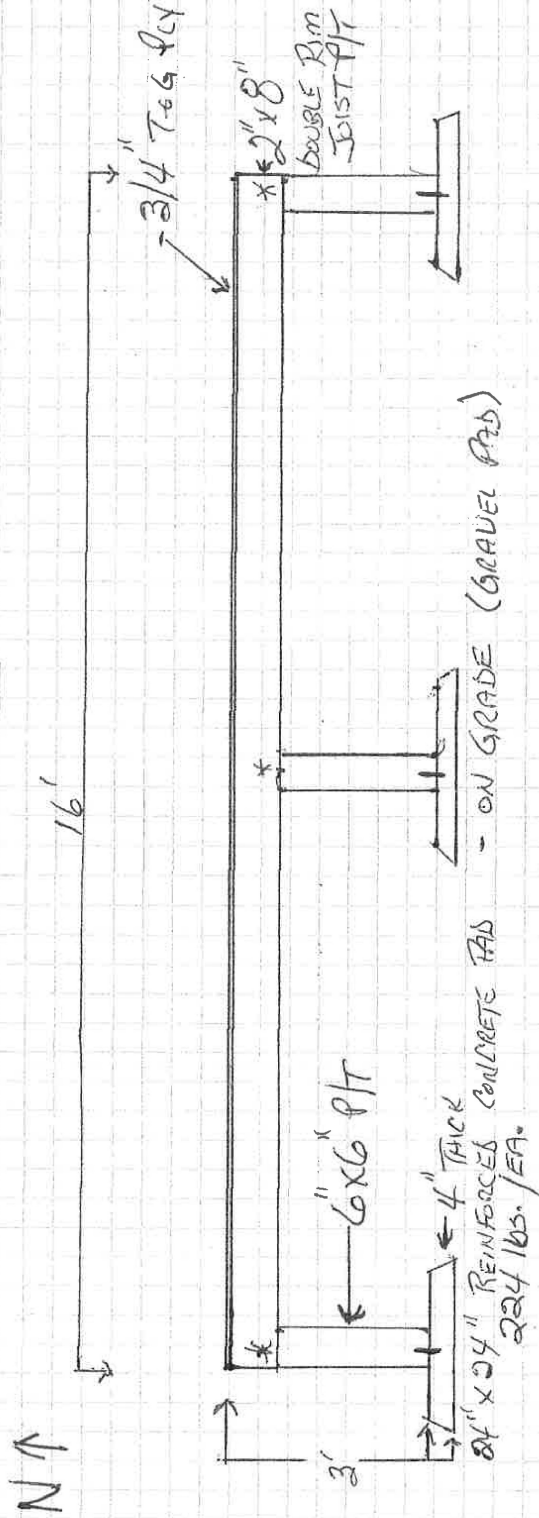
\* 6"X6" POSTS NOTCHED TO CARRY DECK LOAD. SECURED WITH 5" GRK STRUCTURAL SCREWS. POSTS BOUND TO CONCRETE BLOCK W/ 10 MM RE-BAR x 400

PH = PRESSURE TREATED

SCALE: 1/4" = 6"

#4.

# FOUNDATION - SIDE VIEW



NOTE: DOUBLE RIM SECURED WITH 16" NAILING SCHEDULE W/GALVANIZED 3/4" ARDECK NAILS.

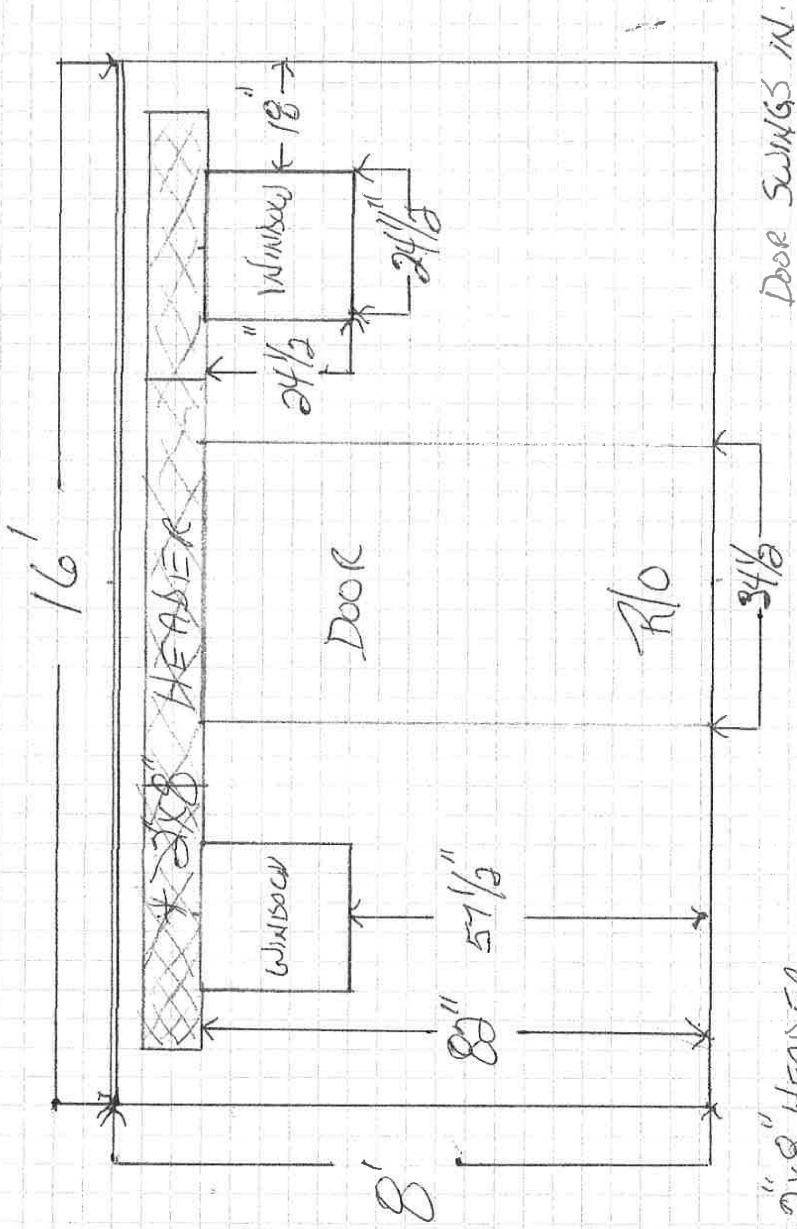
\* 6x6 P/T POSTS NOTICED TO ABBY DECK LOAD. SECURED WITH 5" GRK STRUCTURAL SCREWS. POSTS BUNDLES TO CONCRETE BLOCKS W/10mm REBAR & PL 400

P/T = PRESSURE TREATED

WALLS - WEST END

SCALE: 1/4" = 6'

#5



\* 2"x8" HEADER

2"x4" FRAMED 16" O.C.

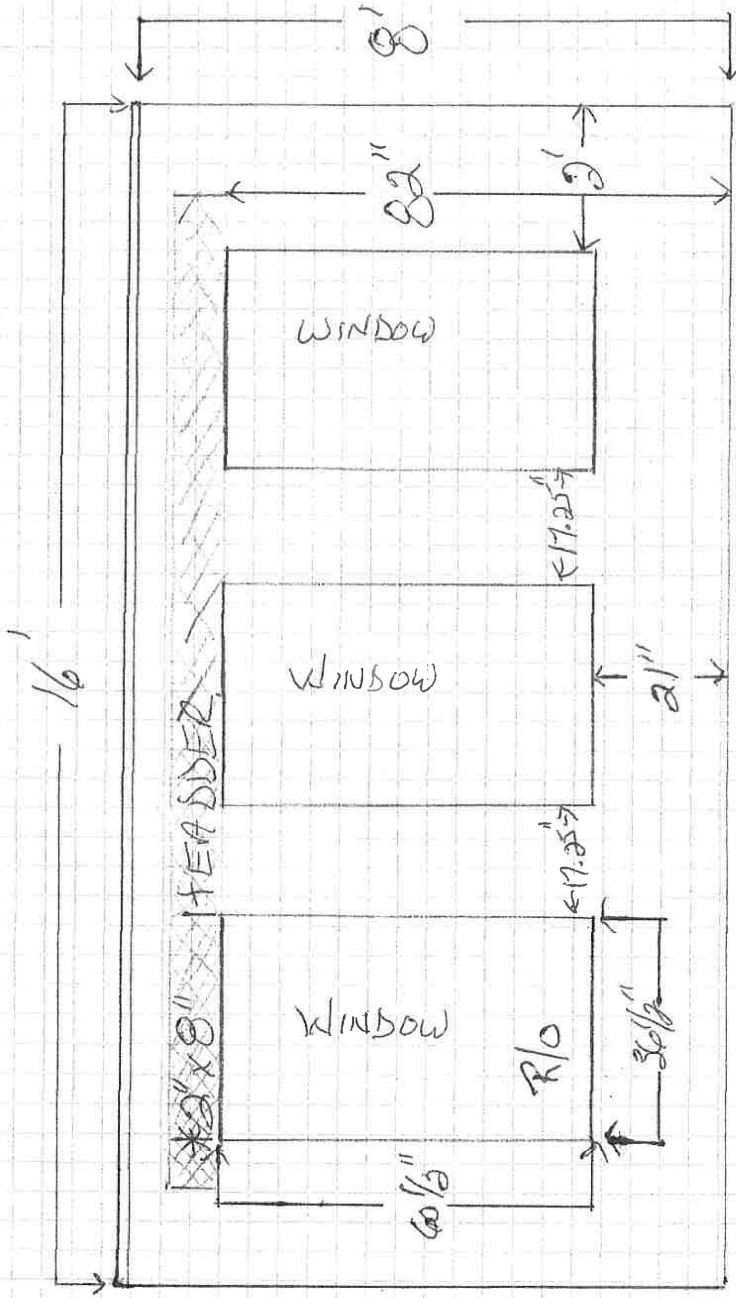
DOUBLE KINGS & JACKS TO SUPPORT HEADER

U-RATING WINDOWS = 1.53 (METRIC)

WALLS - NORTH SIDE

SCALE: 1/4" = 6"

#6



\*2x8" HEADER

2x4" FRAMED 16" O.C.

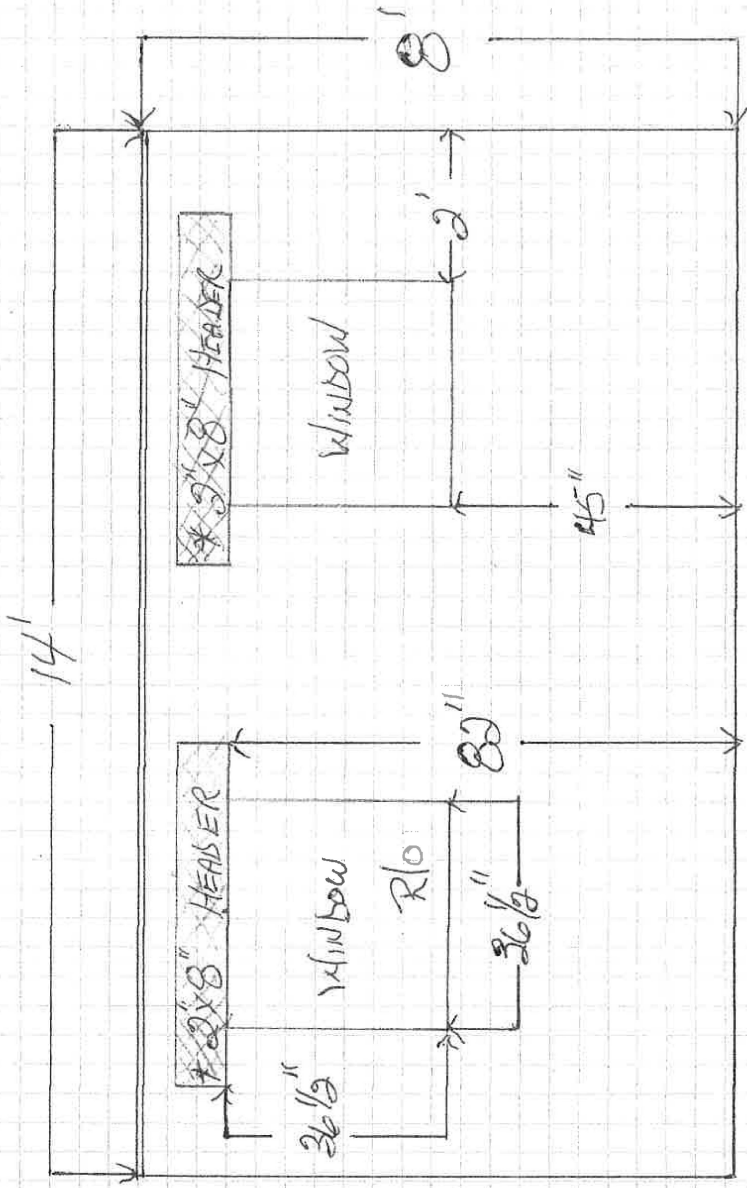
DOUBLE KINGS-JACKS TO SUPPORT HEADER

U-RATING WINDOWS = 1.53 (METRIC)

WALLS - EAST END

SCALE: 1/4" = 6"

#7



#2x8" HEADER

2"x4" FRAMED 16" O.C.

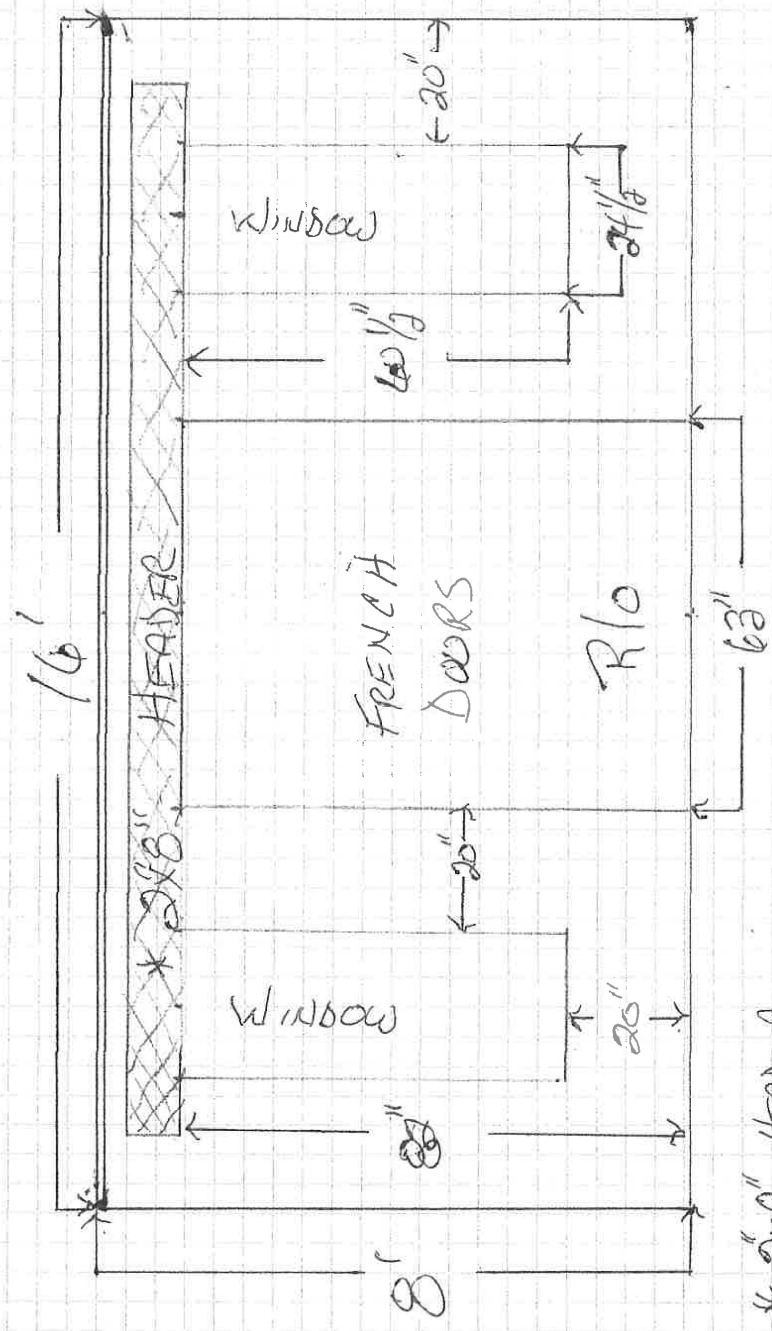
DOUBLE KINGS & JACKS TO SUPPORT HEADER

U-RATING WINDOWS = 1.53 (METRIC)

SCALE: 1/4" = 6"

#8

WALLS - SOUTH SIDE



\* 2x8" HEADER  
2x4" FRAMES 16" O.C.

DOUBLE KINGS & JACKS TO SUPPORT HEADER

U-RATING WINDOWS = 1.58 (METRIC)

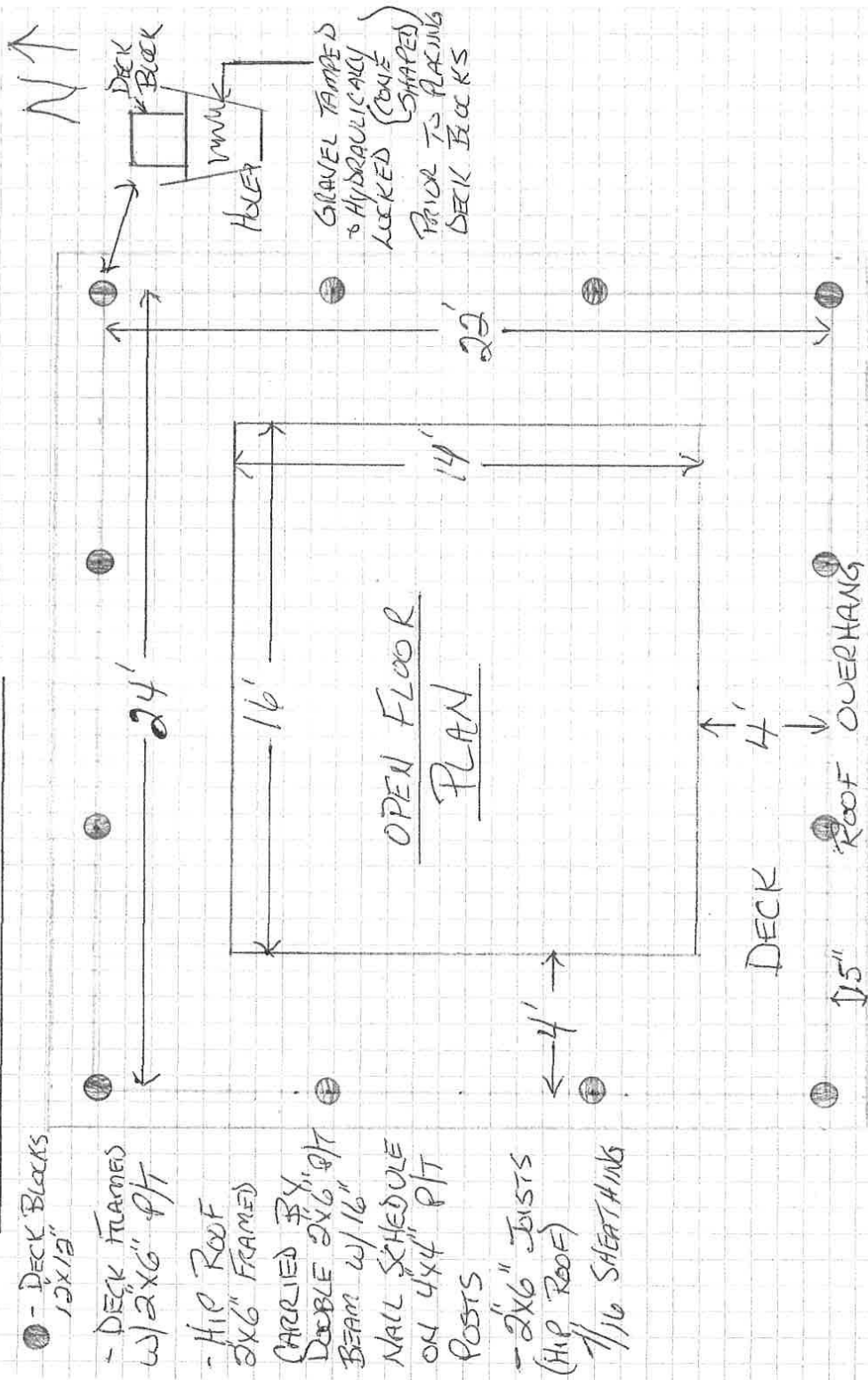
FRENCH DOORS (OUTSWING)



# ROOF LINE / DECK PERIMETER

SCALE: 1/4" = 1'

#9



● - DECK BLOCKS  
12x12"

- DECK FRAMED  
w/ 2x6" PFT

- HIP ROOF  
2x6" FRAMED

(CARRIED BY)  
DOUBLE 2x6" PFT  
BEAM w/ 1/6" PFT  
NAIL SCHEDULE  
ON 4x4" PFT  
POSTS

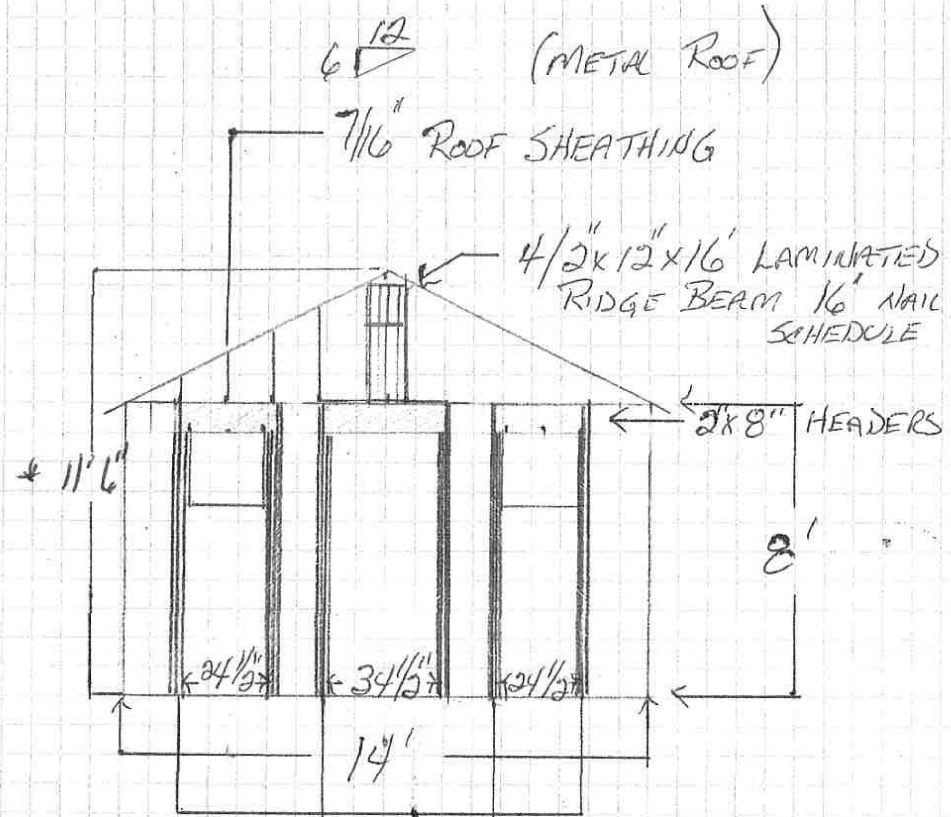
- 2x6" JOISTS  
(HIP ROOF)  
1/16 SHEATHING

#10

- GABLE ROOF
- 2"x8" - JOIST AND COLLAR TIE  
- #2 SPF @ 16" O.C.
- 2"x4" WALLS + GABLES FRAMED 16" O.C.

SCALE: 1/4" = 1'

CROSS SECTION - WEST END



WINDOW & DOOR HEADERS SUPPORTED WITH DOUBLE 2"x4" JACKS & KINGS

\* TOTAL HEIGHT MUST ADD +/- 3' (DECK + CONCRETE BLOCKS)