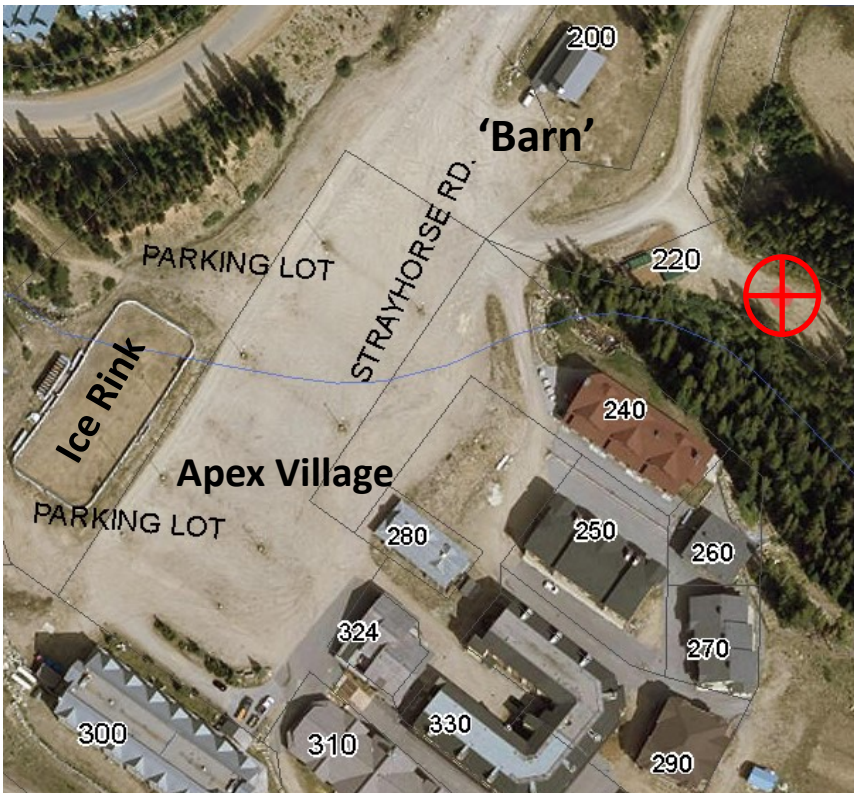


Apex Mountain Waste Transfer Station



December 22, 2022



Waste Transfer Station

220 Strayhorse Rd

below 'Barn' in main parking lot

5 minute parking



Garbage Compactor at Transfer Station:



- Loose or Bagged garbage accepted (Bag pet litter)
- **No** furniture, appliances or mattresses
- **No** construction materials — **No** scrap metal
- **No** hazardous/flammable items or batteries
- **No** dead animals (For disposal contact Landfill or Vet)

Recycling Accepted: Clean and Dry - Place loose in Compactor

[See Recycling Compactor Information Sheet for more details](#)



Paper & Cardboard (cut ski boxes into 3 pieces)



Hard & Brittle Plastic Containers (no toys)



Cans (labels may stay on) & Aluminum foil



Paper Cartons, Tetrapaks -soup etc.)

- **No** glass
- **No** plastic bags
- **No** batteries
- **No** styrofoam
- **No** food

More details on back page

Apex Mountain Waste Transfer Station - Common Questions

- 1. What hours is the Transfer Station open?** Open at all times. This may change if issues arise. Any changes of hours will be posted at the site well in advance of the change.
- 2. Can people park at the Transfer Station property as overflow parking?** No. Parking is restricted to 5 minutes to allow all users access. Vehicles may be towed.
- 3. Can large items, electronics, paint, oil, propane tanks, fire extinguishers or other Hazardous Household items be dropped off?** No. The Transfer Station was not built to house these items safely. The Campbell Mountain Landfill in Penticton has designated areas to receive these items. Do not place these items in the compactor as they could cause damage to the compactor or cause an explosion. The RDOS is looking at potential options for curbside collection for large items. For more information on what is not accepted at Apex Transfer Station, see the information sheet, “Not Accepted”.
- 4. Can renovation materials or scrap metal be dropped off?** No. Renovation, demolition and construction waste and scrap metal can damage the compaction equipment. Renovation materials can also contain asbestos, lead paint, mercury or other hazards - see rdos.bc.ca/demo
- 5. How is the Transfer Station paid for?** In 2017, the RDOS Board determined that the building and equipment will be paid for by taxes and the operational costs will be invoiced separately to all homes and apartments at Apex. Operational costs are covered by an annual fee.
- 6. Cardboard** must be flattened and ski equipment boxes or any long large boxes, please cut into three pieces so the box pieces can fit through the recycling compactor hole that moves materials into the larger attached bin.
- 7. Can recycling be placed in blue, clear or any plastic bag? No plastic bags, wrap, pouches, glass, or styrofoam in the recycling compactor** - this damages the equipment and contaminates other recycling. Please empty clean recycling into recycling compactor, so the recycling is loose. To sort at recycling center, recycling needs to be kept loose. Place bags, glass, styrofoam in garbage or take to a Recycling Depot.
- 8. Is there a list on what is accepted for recycling in the Recycling Compactor?** Yes, please see the information sheet, “Recycling Compactor at Apex Transfer Station”. The information sheet lists common items accepted and also items not accepted in the recycling compactor.
- 9. Not sure how to turn the Compactor on after disposing of garbage or recycling?** Instructions are posted on each compactor. Please also see the info sheet, “Compactor— How to Use”. Please turn on after depositing to prevent overfilling.
- 10. Is the site under video surveillance?** Yes. The RDOS has a policy on how the cameras can be used. For more information, contact the RDOS using the info below.
- 11. Drink Containers:** The Apex Transfer Station was not set up as a bottle return depot. Please take drink containers to your local Bottle Depot, or donate them to Charity. Totes have been set up in the Transfer Station as a trial, but please sort correctly - please read signs.
- 12. Vacation Rentals:** Please ensure your guests know where the Waste Transfer Station is, and what is accepted and not accepted.



RDOS Solid Waste Hotline
info@rdos.bc.ca

250-490-4129 or Toll Free 1-877-610-3737
www.rdos.bc.ca